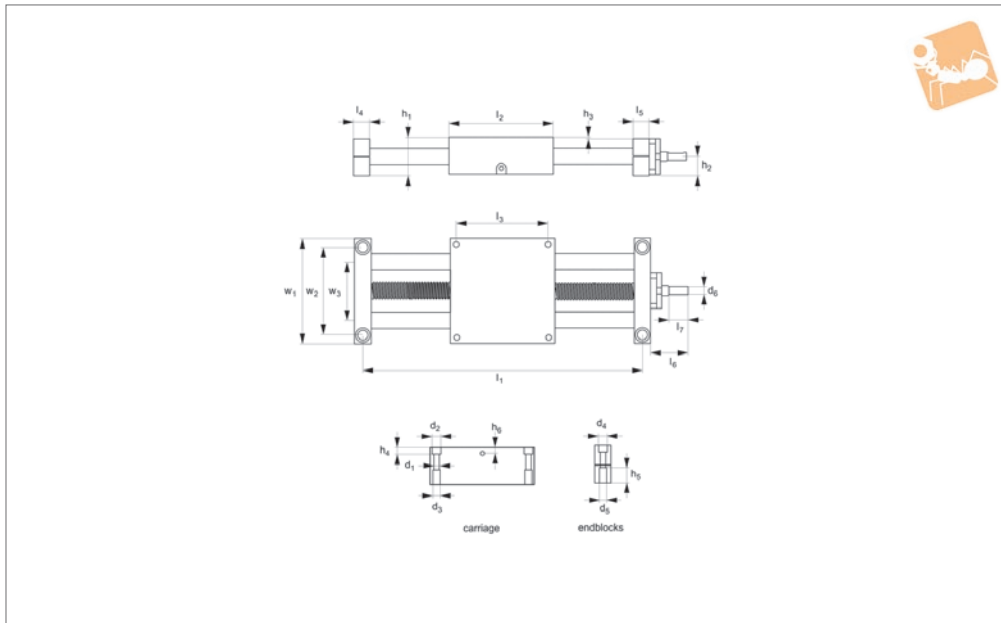
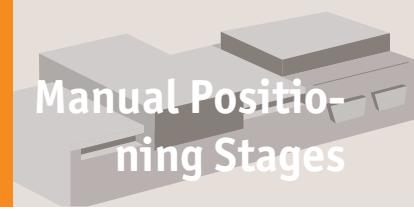




Ball Screw Linear Tables

12mm shafts

Manual Positioning Stages



L3149.12

MANUAL POSITIONING STAGES

Material

Hardened steel shafts.
Aluminium alloy bearing block and end supports.
Self-aligning linear ball bearings, hardened and ground steel body with resin retainers.
Steel ball screw and nut.

as standard to ensure that the balls are permanently in contact with the shaft, even if the shafts bend slightly due to the load put on the table.
Different stroke lengths available on request.

Bellows protection of the lead screw and shaft is available, add -B suffix to the part number.
We strongly recommend you add 50mm to your required stroke.

Technical Notes

Self-aligning linear ball bearings are used

Tips

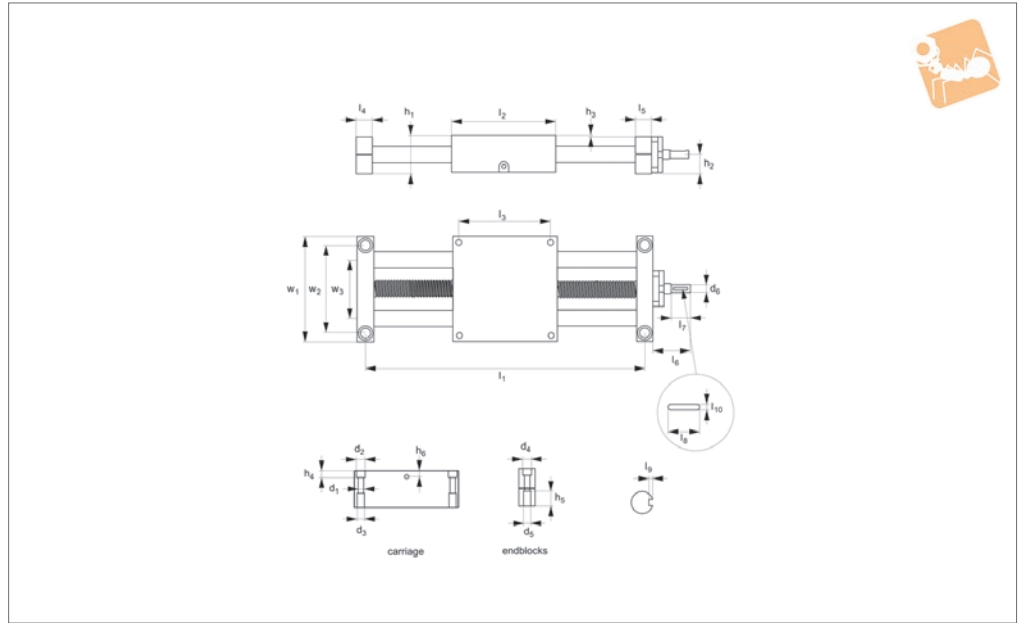
Handwheels to suit are available (see part number L1455)

Order No.	Stroke	l_1	h_1	l_2	l_3	l_4	l_5	l_6	l_7	w_1	w_2	w_3	Weight kg
L3149.12-0100	100	198	31.5	85	73	12	14	23	8	85	73	45	2.2
L3149.12-0150	150	248	31.5	85	73	12	14	23	8	85	73	45	3.3
L3149.12-0200	200	298	31.5	85	73	12	14	23	8	85	73	45	4.4
L3149.12-0250	250	348	31.5	85	73	12	14	23	8	85	73	45	5.5
L3149.12-0300	300	398	31.5	85	73	12	14	23	8	85	73	45	6.6
L3149.12-0350	350	448	31.5	85	73	12	14	23	8	85	73	45	7.7
L3149.12-0400	400	498	31.5	85	73	12	14	23	8	85	73	45	8.8
L3149.12-0450	450	548	31.5	85	73	12	14	23	8	85	73	45	9.9
L3149.12-0500	500	598	31.5	85	73	12	14	23	8	85	73	45	10.10

Order No.	d_1	d_2	d_3	d_4	d_5	d_6	h_2	h_3	h_4	h_5	h_6	Ball screw dia. x lead	Static load N max.
L3149.12-0100	5.2	10	M6x12	5.5	10.7	4	15	1.5	5.5	5.7	7.5	8x2,5	3900
L3149.12-0150	5.2	10	M6x12	5.5	10.7	4	15	1.5	5.5	5.7	7.5	8x2,5	3100
L3149.12-0200	5.2	10	M6x12	5.5	10.7	4	15	1.5	5.5	5.7	7.5	8x2,5	2500
L3149.12-0250	5.2	10	M6x12	5.5	10.7	4	15	1.5	5.5	5.7	7.5	8x2,5	1500
L3149.12-0300	5.2	10	M6x12	5.5	10.7	4	15	1.5	5.5	5.7	7.5	8x2,5	1200
L3149.12-0350	5.2	10	M6x12	5.5	10.7	4	15	1.5	5.5	5.7	7.5	8x2,5	1000
L3149.12-0400	5.2	10	M6x12	5.5	10.7	4	15	1.5	5.5	5.7	7.5	8x2,5	900
L3149.12-0450	5.2	10	M6x12	5.5	10.7	4	15	1.5	5.5	5.7	7.5	8x2,2	750
L3149.12-0500	5.2	10	M6x12	5.5	10.7	4	15	1.5	5.5	5.7	7.5	8x2,5	500



L3149.20



Material

Hardened steel shafts.
Aluminium alloy bearing block and end supports.
Self-aligning linear ball bearings, hardened and ground steel body with resin retainers.
Steel ball screw and nut.

Technical Notes

Self-aligning linear ball bearings are used

as standard to ensure that the balls are permanently in contact with the shaft, even if the shafts bend slightly due to the load put on the table.
Different stroke lengths available on request.

Tips

Handwheels to suit are available (see part number L1455)

Bellows protection of the lead screw and shaft is available, add -B suffix to the part number.
We strongly recommend you add 50mm to your required.

Order No.	Stroke	l_1	h_1	l_2	l_3	l_4	l_5	l_6	l_7	l_8	l_9	l_{10}	w_1	w_2	Weight kg
L3149.20-0100	100	250	48	130	115	20	20	49	25	18	3	1.8	130	108	6.4
L3149.20-0150	150	300	48	130	115	20	20	49	25	18	3	1.8	130	108	9.6
L3149.20-0200	200	350	48	130	115	20	20	49	25	18	3	1.8	130	108	12.8
L3149.20-0250	250	400	48	130	115	20	20	49	25	18	3	1.8	130	108	16.0
L3149.20-0300	300	450	48	130	115	20	20	49	25	18	3	1.8	130	108	19.2
L3149.20-0350	350	500	48	130	115	20	20	49	25	18	3	1.8	130	108	22.4
L3149.20-0400	400	550	48	130	115	20	20	49	25	18	3	1.8	130	108	25.6
L3149.20-0450	450	600	48	130	115	20	20	49	25	18	3	1.8	130	108	28.8
L3149.20-0500	500	650	48	130	115	20	20	49	25	18	3	1.8	130	108	32.0
L3149.20-0550	550	700	48	130	115	20	20	49	25	18	3	1.8	130	108	35.2
L3149.20-0600	600	750	48	130	115	20	20	49	25	18	3	1.8	130	108	38.4
L3149.20-0650	650	800	48	130	115	20	20	49	25	18	3	1.8	130	108	41.6
L3149.20-0700	700	850	48	130	115	20	20	49	25	18	3	1.8	130	108	44.8
L3149.20-0750	750	900	48	130	115	20	20	49	25	18	3	1.8	130	108	48.0
L3149.20-0800	800	950	48	130	115	20	20	49	25	18	3	1.8	130	108	51.2
L3149.20-0850	850	1000	48	130	115	20	20	49	25	18	3	1.8	130	108	54.4
L3149.20-0900	900	1050	48	130	115	20	20	49	25	18	3	1.8	130	108	57.6
L3149.20-0950	950	1100	48	130	115	20	20	49	25	18	3	1.8	130	108	60.8
L3149.20-1000	1000	1150	48	130	115	20	20	49	25	18	3	1.8	130	108	64.0

Order No.	w_3	d_1	d_2	d_3	d_4	d_5	d_6	h_2	h_3	h_4	h_5	h_6	Ball screw dia. x lead	Static load N max.
L3149.20-0100	72	6.8	11	M8x18	11	18	10	24	2	8.5	13.5	7.5	16x05	6750
L3149.20-0150	72	6.8	11	M8x18	11	18	10	24	2	8.5	13.5	7.5	16x05	6750
L3149.20-0200	72	6.8	11	M8x18	11	18	10	24	2	8.5	13.5	7.5	16x05	6750



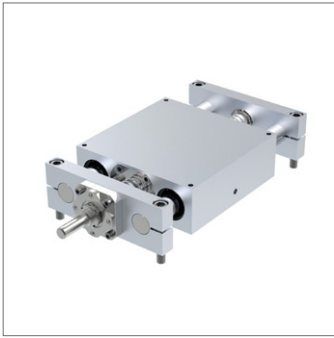
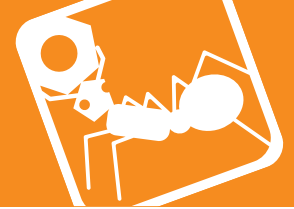
Ball Screw Linear Tables

20mm shafts

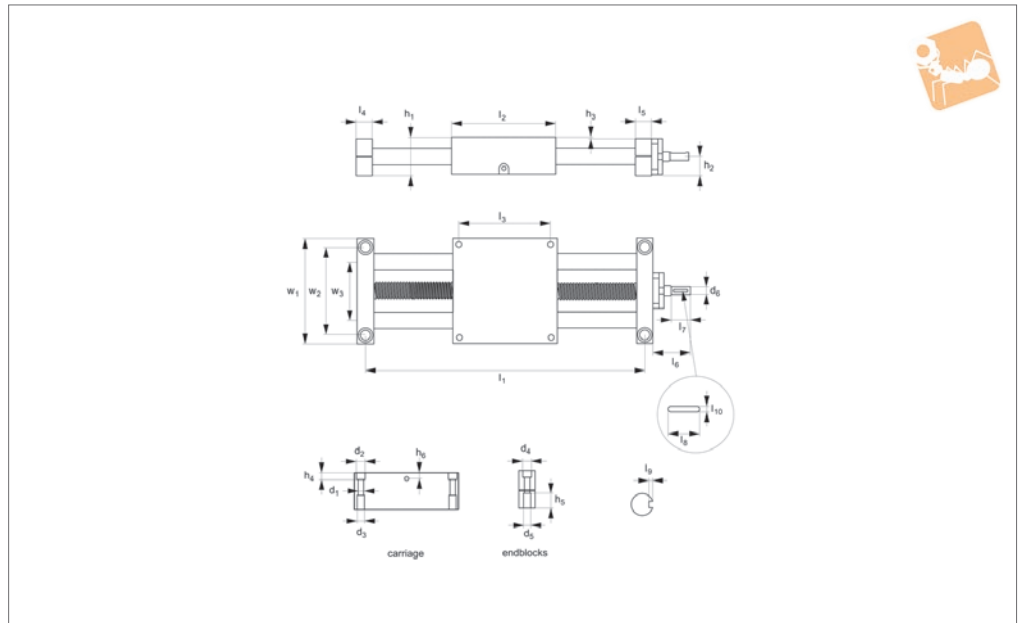
Manual Positioning Stages

Order No.	w ₃	d ₁	d ₂	d ₃	d ₄	d ₅	d ₆	h ₂	h ₃	h ₄	h ₅	h ₆	Ball screw dia. x lead	Static load N max.
L3149.20-0250	72	6.8	11	M8x18	11	18	10	24	2	8.5	13.5	7.5	16x05	6750
L3149.20-0300	72	6.8	11	M8x18	11	18	10	24	2	8.5	13.5	7.5	16x05	6750
L3149.20-0350	72	6.8	11	M8x18	11	18	10	24	2	8.5	13.5	7.5	16x05	6000
L3149.20-0400	72	6.8	11	M8x18	11	18	10	24	2	8.5	13.5	7.5	16x05	4750
L3149.20-0450	72	6.8	11	M8x18	11	18	10	24	2	8.5	13.5	7.5	16x05	3500
L3149.20-0500	72	6.8	11	M8x18	11	18	10	24	2	8.5	13.5	7.5	16x05	2500
L3149.20-0550	72	6.8	11	M8x18	11	18	10	24	2	8.5	13.5	7.5	16x05	1750
L3149.20-0600	72	6.8	11	M8x18	11	18	10	24	2	8.5	13.5	7.5	16x05	1500
L3149.20-0650	72	6.8	11	M8x18	11	18	10	24	2	8.5	13.5	7.5	16x05	1250
L3149.20-0700	72	6.8	11	M8x18	11	18	10	24	2	8.5	13.5	7.5	16x05	1000
L3149.20-0750	72	6.8	11	M8x18	11	18	10	24	2	8.5	13.5	7.5	16x05	750
L3149.20-0800	72	6.8	11	M8x18	11	18	10	24	2	8.5	13.5	7.5	16x05	750
L3149.20-0850	72	6.8	11	M8x18	11	18	10	24	2	8.5	13.5	7.5	16x05	600
L3149.20-0900	72	6.8	11	M8x18	11	18	10	24	2	8.5	13.5	7.5	16x05	500
L3149.20-0950	72	6.8	11	M8x18	11	18	10	24	2	8.5	13.5	7.5	16x05	400
L3149.20-1000	72	6.8	11	M8x18	11	18	10	24	2	8.5	13.5	7.5	16x05	300

MANUAL POSITIONING STAGES



L3149.30



Material

Hardened steel shafts.
Aluminium alloy bearing block and end supports.
Self-aligning linear ball bearings, hardened and ground steel body with resin retainers.
Steel ball screw and nut.

Technical Notes

Self-aligning linear ball bearings are used

as standard to ensure that the balls are permanently in contact with the shaft, even if the shafts bend slightly due to the load put on the table.
Different stroke lengths available on request.

Tips

Handwheels to suit are available (see part number L1455)

Bellows protection of the lead screw and shaft is available, add -B suffix to the part number.
We strongly recommend you add 50mm to your required.

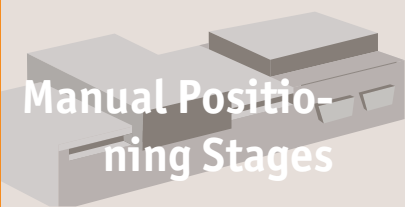
Order No.	Stroke	l_1	h_1	l_2	l_3	l_4	l_5	l_6	l_7	l_8	l_9	l_{10}	w_1	w_2	Weight g
L3149.30-0100	100	322	70	200	184	22	22	80	45	36	5	3	200	178	17.1
L3149.30-0150	150	372	70	200	184	22	22	80	45	36	5	3	200	178	25.6
L3149.30-0200	200	422	70	200	184	22	22	80	45	36	5	3	200	178	34.2
L3149.30-0250	250	472	70	200	184	22	22	80	45	36	5	3	200	178	42.7
L3149.30-0300	300	522	70	200	184	22	22	80	45	36	5	3	200	178	51.3
L3149.30-0350	350	572	70	200	184	22	22	80	45	36	5	3	200	178	59.8
L3149.30-0400	400	622	70	200	184	22	22	80	45	36	5	3	200	178	68.4
L3149.30-0450	450	672	70	200	184	22	22	80	45	36	5	3	200	178	76.9
L3149.30-0500	500	722	70	200	184	22	22	80	45	36	5	3	200	178	85.5
L3149.30-0550	550	772	70	200	184	22	22	80	45	36	5	3	200	178	94.0
L3149.30-0600	600	822	70	200	184	22	22	80	45	36	5	3	200	178	102.6
L3149.30-0650	650	872	70	200	184	22	22	80	45	36	5	3	200	178	111.1
L3149.30-0700	700	922	70	200	184	22	22	80	45	36	5	3	200	178	119.7
L3149.30-0750	750	972	70	200	184	22	22	80	45	36	5	3	200	178	128.2
L3149.30-0800	800	1022	70	200	184	22	22	80	45	36	5	3	200	178	136.8
L3149.30-0850	850	1072	70	200	184	22	22	80	45	36	5	3	200	178	145.3
L3149.30-0900	900	1122	70	200	184	22	22	80	45	36	5	3	200	178	153.9
L3149.30-0950	950	1172	70	200	184	22	22	80	45	36	5	3	200	178	162.4
L3149.30-1000	1000	1222	70	200	184	22	22	80	45	36	5	3	200	178	171.0

Order No.	w_3	d_1	d_2	d_3	d_4	d_5	d_6	h_2	h_3	h_4	h_5	h_6	Ball screw dia. x lead	Static load N max.
L3149.30-0100	130	6.8	11	M8x18	13	20	16	36	2	8.5	14	15	32x05	11500
L3149.30-0150	130	6.8	11	M8x18	13	20	16	36	2	8.5	14	15	32x05	11500
L3149.30-0200	130	6.8	11	M8x18	13	20	16	36	2	8.5	14	15	32x05	11500



Ball Screw Linear Tables

30mm shafts



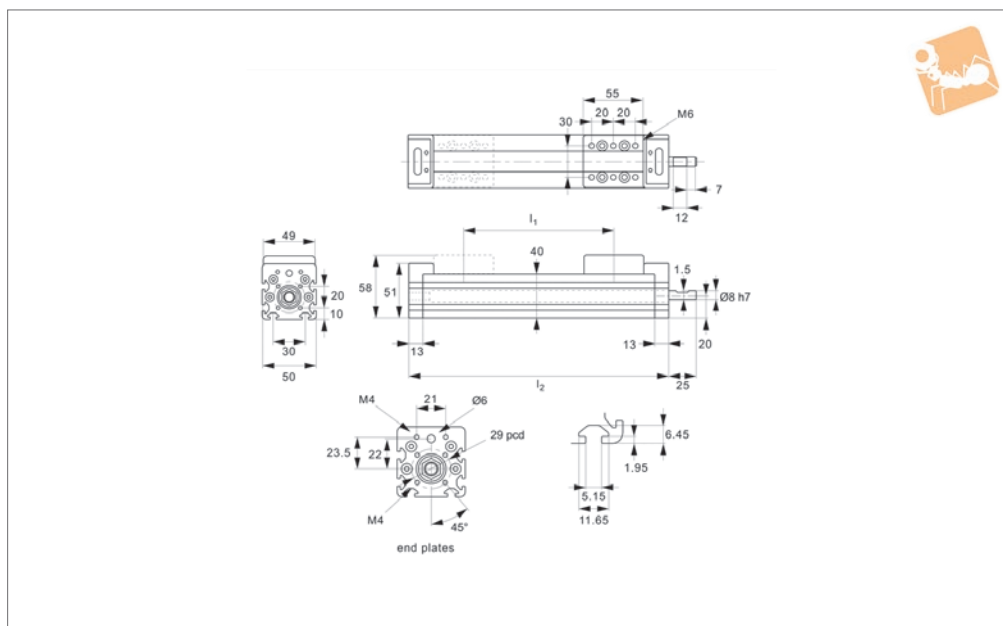
Manual Positioning Stages

Order No.	w ₃	d ₁	d ₂	d ₃	d ₄	d ₅	d ₆	h ₂	h ₃	h ₄	h ₅	h ₆	Ball screw dia. x lead	Static load N max.
L3149.30-0250	130	6.8	11	M8x18	13	20	16	36	2	8.5	14	15	32x05	11500
L3149.30-0300	130	6.8	11	M8x18	13	20	16	36	2	8.5	14	15	32x05	11500
L3149.30-0350	130	6.8	11	M8x18	13	20	16	36	2	8.5	14	15	32x05	11500
L3149.30-0400	130	6.8	11	M8x18	13	20	16	36	2	8.5	14	15	32x05	11500
L3149.30-0450	130	6.8	11	M8x18	13	20	16	36	2	8.5	14	15	32x05	11500
L3149.30-0500	130	6.8	11	M8x18	13	20	16	36	2	8.5	14	15	32x05	10800
L3149.30-0550	130	6.8	11	M8x18	13	20	16	36	2	8.5	14	15	32x05	9000
L3149.30-0600	130	6.8	11	M8x18	13	20	16	36	2	8.5	14	15	32x05	7000
L3149.30-0650	130	6.8	11	M8x18	13	20	16	36	2	8.5	14	15	32x05	5750
L3149.30-0700	130	6.8	11	M8x18	13	20	16	36	2	8.5	14	15	32x05	4800
L3149.30-0750	130	6.8	11	M8x18	13	20	16	36	2	8.5	14	15	32x05	4000
L3149.30-0800	130	6.8	11	M8x18	13	20	16	36	2	8.5	14	15	32x05	3500
L3149.30-0850	130	6.8	11	M8x18	13	20	16	36	2	8.5	14	15	32x05	3000
L3149.30-0900	130	6.8	11	M8x18	13	20	16	36	2	8.5	14	15	32x05	2500
L3149.30-0950	130	6.8	11	M8x18	13	20	16	36	2	8.5	14	15	32x05	2250
L3149.30-1000	130	6.8	11	M8x18	13	20	16	36	2	8.5	14	15	32x05	2000

MANUAL POSITIONING STAGES



L3147.S



Material

Aluminium body (anodised), with die cast zinc end plates. Steel lead screw with bronze nut. Stainless steel dust cover (AISI 304).

Technical Notes

Uses a 14 trapezoidal lead screw with 3mm

pitch.

Rigid, economical and light-weight. Can be used as a single in series, or a single or double unit in parallel, (connected via pulleys and belt drive). Ideal for slide adjustment on conveyors, fixtures, packing machines etc.

Tips

Often used in conjunction with one touch lock spindles, position indicators, hand-wheels etc.

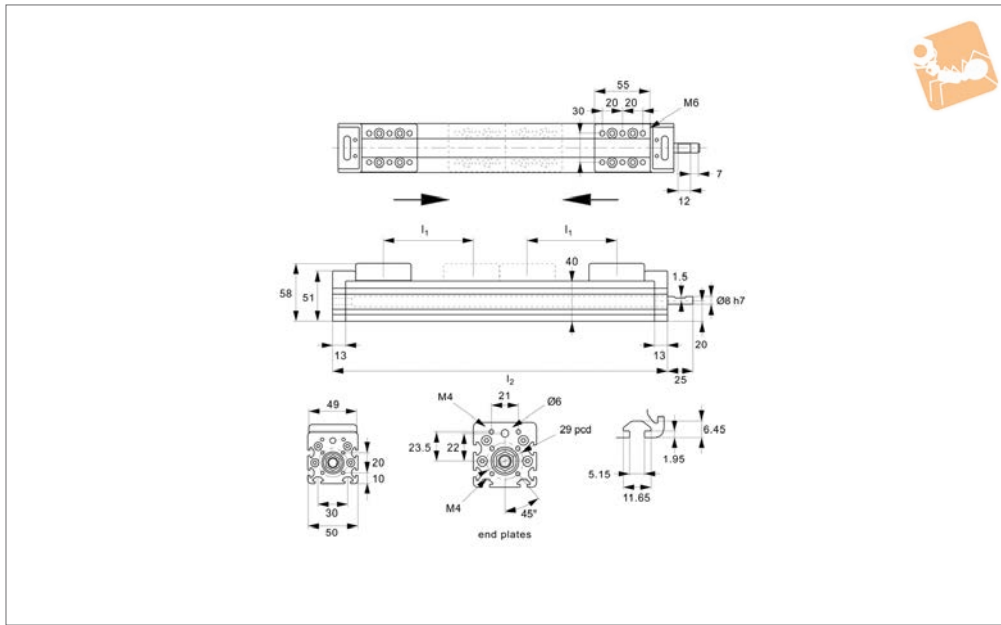
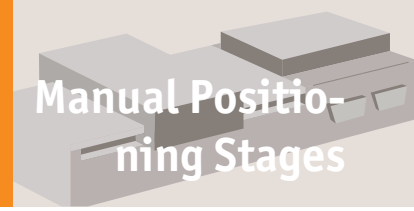
Order No.	Travel l ₁	Rotation direction	l ₂	Weight kg
L3147.S150-L	150	Counter-clockwise	250	1.7
L3147.S200-R	200	Clockwise	300	1.9
L3147.S200-L	200	Counter-clockwise	300	1.9
L3147.S300-R	300	Clockwise	400	2.0
L3147.S300-L	300	Counter-clockwise	400	2.0
L3147.S150-R	150	Clockwise	250	1.7
L3147.S250-R	250	Clockwise	350	2.0
L3147.S250-L	250	Counter-clockwise	350	2.0



Lead Screw Linear Stages

double carriage

Manual Positioning Stages



L3147.D

MANUAL POSITIONING STAGES

Material

Aluminium body (anodised), with die cast zinc end plates. Steel lead screw with bronze nut. Stainless steel dust cover (AISI 304).

Technical Notes

Uses a 14 trapezoidal lead screw with 3mm

pitch.

Rigid, economical and light-weight. Can be used as a single in series, or a single or double unit in parallel, (connected via pulleys and belt drive). Ideal for slide adjustment on conveyors, fixtures, packing machines etc.

Tips

Often used in conjunction with one touch lock spindles, position indicators, hand-wheels etc.

Order No.	Travel l_1	l_2	Weight kg
L3147.D150	150	455	2.4
L3147.D100	100	355	2.4