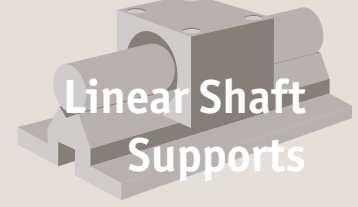


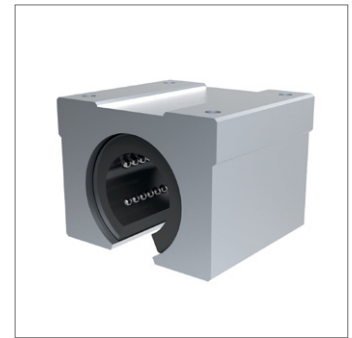
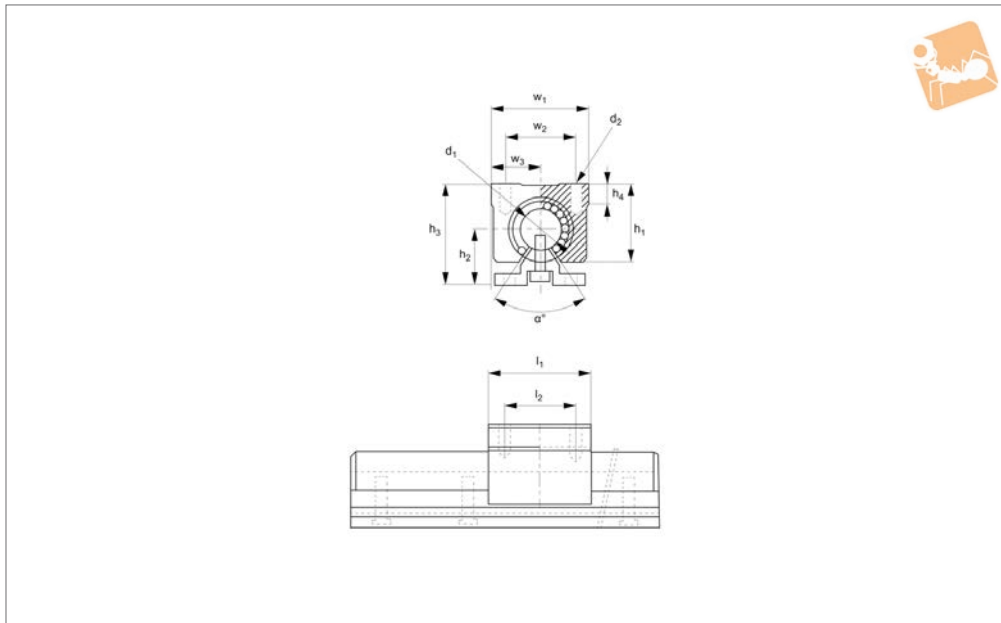


# Open Linear Ball Bushing Carriages

unflanged



## Linear Shaft Supports



## L1752

LINEAR SHAFT SUPPORTS

### Material

Aluminium body, with L1707 (steel shell) linear bearing installed. Bearing has a resin retainer (POM). Supplied with nitrile rubber (NBR) end seals -UU as standard.

### Technical Notes

For use with hardened shafts only - see

part no.s L1770 - L1772.

Temperature range: -20°C to +80°C.

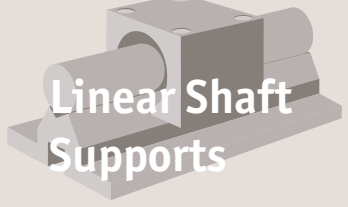
### Tips

Use with shaft support rail L1780. Particularly effective for high loads and long stroke applications.

### Important Notes

If using the carriage inverted, ie hanging loads, then the load rating is reduced by 50%.

Order No.	$d_1$ tol. h6	$l_1$	$d_2$	$h_1$	$h_2$	$h_3$ $\pm 0.05$	$h_4$	$l_2$ $\pm 0.2$	$w_1$	$w_2$ $\pm 0.2$	$w_3$	$\alpha$ $^\circ$	Dyn. load C N max.	Static load $C_0$ N max.	Weight g
L1752.016	16	45	M 5x12	33	26	46	9	30	45	32	22.5	80°	770	1170	150
L1752.020	20	50	M 6x12	39	32	55	11	35	48	35	24.0	60°	860	1370	200
L1752.025	25	65	M 6x12	47	36	62	14	40	60	40	30.0	50°	980	1560	450
L1752.030	30	70	M 8x18	56	42	75	15	50	70	50	35.0	50°	1560	2740	630
L1752.040	40	90	M10x20	72	50	92	20	65	90	65	45.0	50°	2150	4010	1330
L1752.050	50	110	M10x20	91	60	113	25	80	120	94	60.0	50°	3820	7930	3000



# Linear Shaft Supports

## Stainless Unflanged Carriages

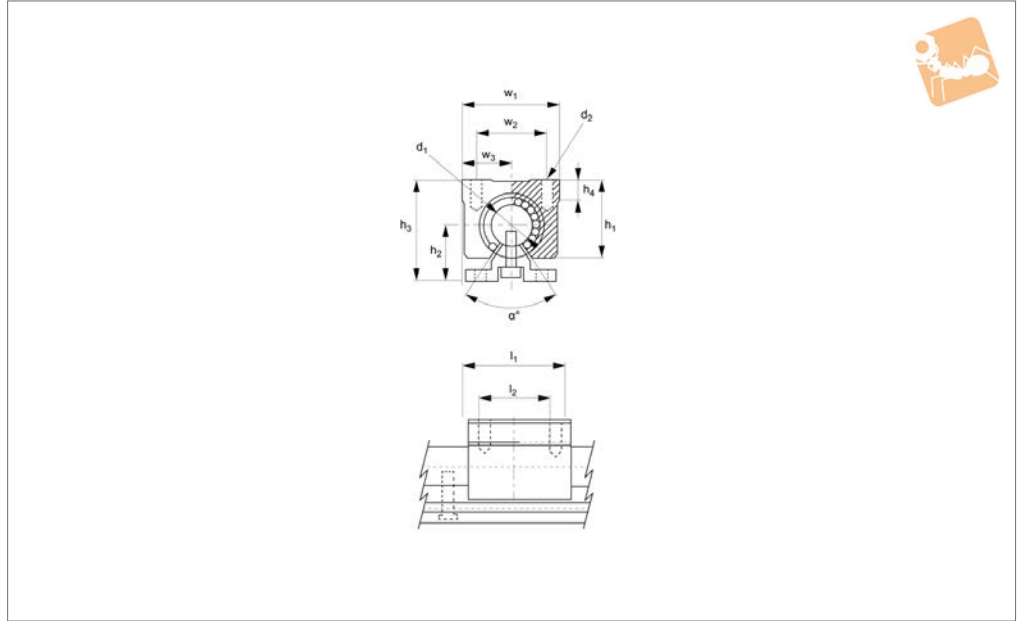
open



LINEAR SHAFT SUPPORTS



### L1753



#### Material

Aluminium carriage housing with L1710 stainless steel (440C) linear bushing installed. Bushing has a resin -RS (POM) or stainless steel -SS (316) retainer and nitrile rubber (NBR) end seals -UU. Stainless steel balls 440C.

number L1781 with hardened corrosive resistant shaft).

Temperature range: -20°C to +120°C.

loads, then the load rating is reduced by 50%.

#### Tips

Particularly effective for high loads and long stroke applications.

#### Important Notes

If using the carriage inverted, ie hanging

#### Technical Notes

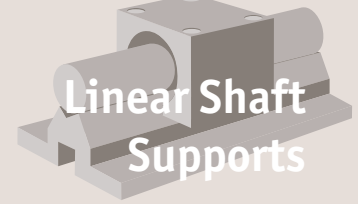
For use with shaft support rails (see part

Order No.	$d_1$ tol. H6	$l_1$	$d_2$	$h_1$	$h_2$	$h_3$ $\pm 0.05$	$h_4$	$l_2$ $\pm 0.2$	$w_1$	$w_2$ $\pm 0.2$	$w_3$	$\alpha^\circ$	Dyn. load C N max.	Static load $C_0$ N max.	Weight g
L1753.016-RS	16	45	M5x12	33	26	46	9	30	45	32	22.5	80°	770	1170	150
L1753.020-RS	20	50	M6x12	39	32	55	11	35	48	35	24.0	60°	860	1370	200
L1753.025-RS	25	65	M6x12	47	36	63	14	40	60	40	30.0	50°	980	1560	450
L1753.016-SS	16	45	M5x12	33	26	46	9	30	45	32	22.5	80°	770	1170	150
L1753.020-SS	20	50	M6x12	39	32	55	11	35	48	35	24.0	60°	860	1370	200
L1753.025-SS	25	65	M6x12	47	36	63	14	40	60	40	30.0	50°	980	1560	450

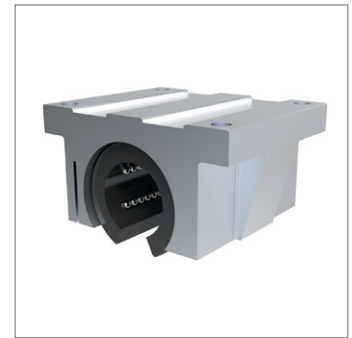
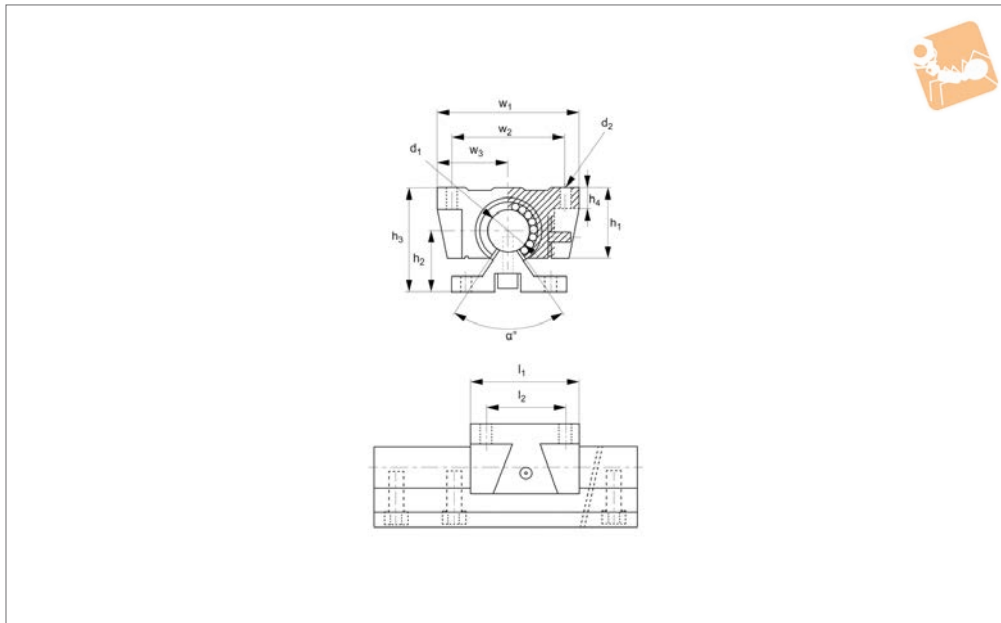


# Flanged Linear Carriages

open



## Linear Shaft Supports



### L1755

LINEAR SHAFT SUPPORTS

#### Material

Aluminium body, with L1707 (steel shell) linear bearing installed. Bearing has a resin retainer (POM). Supplied with nitrile rubber (NBR) end seals -UU as standard.

#### Technical Notes

For use with shaft support rails (see part

number L1781 with hardened corrosive resistant shaft).

Temperature range: -20°C to +80°C.

Steel ball retainers can be supplied for higher temperature applications (up to +120°C - with no end seals. Please advise at time of ordering if this is required.

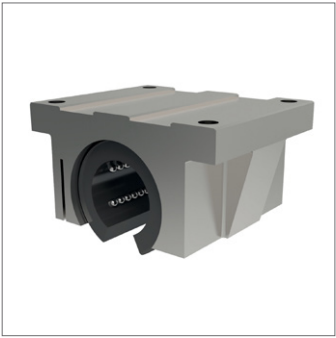
#### Tips

Particularly effective for high loads and long stroke applications.

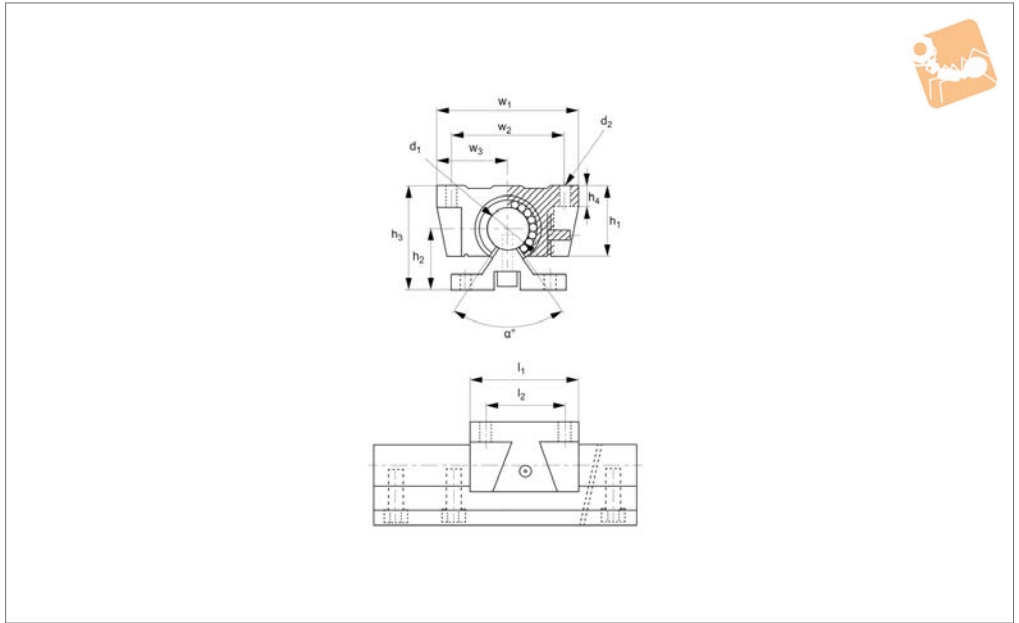
#### Important Notes

**If using the carriage inverted, ie hanging loads, then the load rating is reduced by 50%.**

Order No.	$d_1$ tol. H6	$l_1$	$d_2$	$h_1$	$h_2$	$h_3$ $\pm 0.05$	$h_4$	$l_2$ $\pm 0.2$	$w_1$	$w_2$ $\pm 0.2$	$w_3$	$\alpha$ $^\circ$	Dyn. load C N max.	Static load $C_0$ N max.	Weight g
L1755.016	16	42	M5	26	26	44	8	30	62	50	31.0	80°	392	490	180
L1755.020	20	51	M6	31	32	53	10	37	68	54	34.0	60°	784	1176	300
L1755.025	25	65	M8	41	36	64	12	50	82	65	41.0	50°	1568	2352	600
L1755.030	30	75	M8	48	42	76	12	60	91	75	45.5	50°	1764	2940	900



## L1756



### Material

Aluminium carriage housing with L1710 stainless steel (440C) linear bushing installed.

Bushing has a resin -RS (POM) retainer and nitrile rubber (NBR) end seals -UU. Stainless steel balls 440C.

### Technical Notes

For use with shaft support rails (see part

number L1781 with hardened corrosive resistant shaft).

Temperature range: -20°C to +120°C.

### Tips

Particularly effective for high loads and long stroke applications.

### Important Notes

**If using the carriage inverted, ie hanging**

**loads, then the load rating is reduced by 50%.**

Order No.	d <sub>1</sub> tol. H6	l <sub>1</sub>	d <sub>2</sub>	h <sub>1</sub>	h <sub>2</sub>	h <sub>3</sub> ±0.05	h <sub>4</sub>	l <sub>2</sub> ±0.2	w <sub>1</sub>	w <sub>2</sub> ±0.2	w <sub>3</sub>	α °	Dyn. load C N max.	Static load C <sub>0</sub> N max.	Weight g
L1756.016-RS	16	42	M5	26	26	44	8	30	62	50	31	80°	392	490	180
L1756.020-RS	20	51	M6	31	32	53	10	37	68	54	34	60°	784	1176	300
L1756.025-RS	25	65	M8	41	36	64	12	50	82	65	41	50°	1568	2352	600