

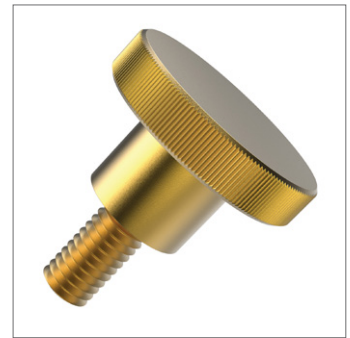
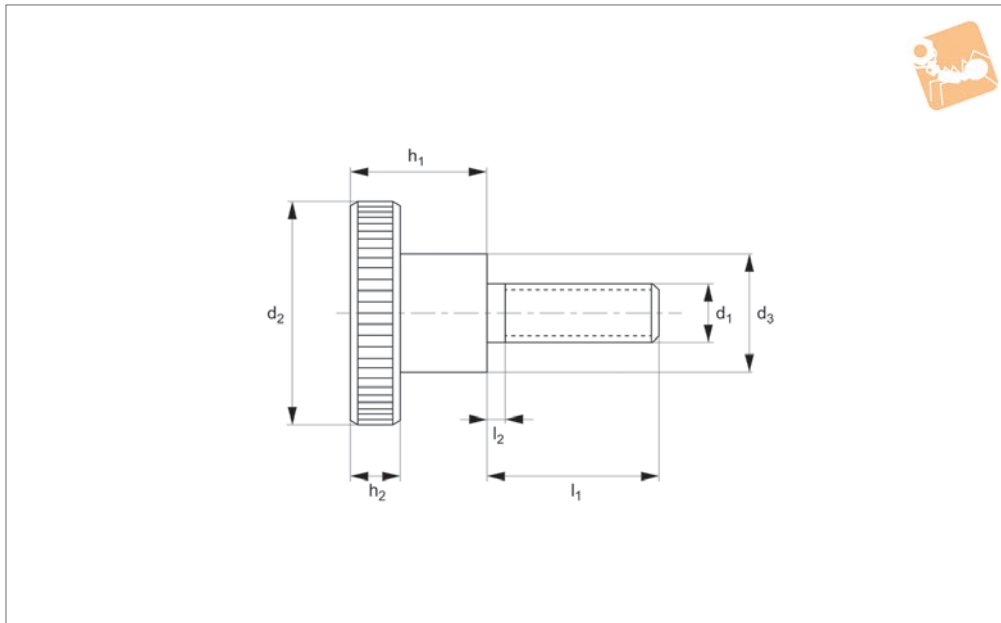


Brass Knurled Thumb Screws

brass



Thumb Screws



P0400.BR

THUMB SCREWS

Material

Brass.

piece manufactured, contrary to the official standard sheet, they all have a thread up to the head, as shown, but no recess at the thread end.

Technical Notes

To DIN 464, all knurled screws are one-

Order No.	d ₁	l ₁	d ₂	d ₃	h ₁	h ₂	l ₂
P0400.030-004-BR	M 3	4	12	6	7.5	2.5	2
P0400.030-006-BR	M 3	6	12	6	7.5	2.5	2
P0400.030-008-BR	M 3	8	12	6	7.5	2.5	2
P0400.030-010-BR	M 3	10	12	6	7.5	2.5	2
P0400.030-012-BR	M 3	12	12	6	7.5	2.5	2
P0400.030-016-BR	M 3	16	12	6	7.5	2.5	2
P0400.030-020-BR	M 3	20	12	6	7.5	2.5	2
P0400.040-006-BR	M 4	6	16	8	9.5	3.5	2
P0400.040-008-BR	M 4	8	16	8	9.5	3.5	2
P0400.040-010-BR	M 4	10	16	8	9.5	3.5	2
P0400.040-012-BR	M 4	12	16	8	9.5	3.5	2
P0400.040-016-BR	M 4	16	16	8	9.5	3.5	2
P0400.040-020-BR	M 4	20	16	8	9.5	3.5	2
P0400.040-030-BR	M 4	30	16	8	9.5	3.5	2
P0400.050-006-BR	M 5	6	20	10	11.5	4.0	2
P0400.050-008-BR	M 5	8	20	10	11.5	4.0	2
P0400.050-010-BR	M 5	10	20	10	11.5	4.0	2
P0400.050-012-BR	M 5	12	20	10	11.5	4.0	2
P0400.050-016-BR	M 5	16	20	10	11.5	4.0	2
P0400.050-020-BR	M 5	20	20	10	11.5	4.0	2
P0400.050-025-BR	M 5	25	20	10	11.5	4.0	2
P0400.050-030-BR	M 5	30	20	10	11.5	4.0	2
P0400.060-008-BR	M 6	8	24	12	15.0	5.0	2
P0400.060-010-BR	M 6	10	24	12	15.0	5.0	2
P0400.060-012-BR	M 6	12	24	12	15.0	5.0	2
P0400.060-016-BR	M 6	16	24	12	15.0	5.0	2
P0400.060-020-BR	M 6	20	24	12	15.0	5.0	2
P0400.060-025-BR	M 6	25	24	12	15.0	5.0	2
P0400.060-030-BR	M 6	30	24	12	15.0	5.0	2
P0400.060-040-BR	M 6	40	24	12	15.0	5.0	2
P0400.080-012-BR	M 8	12	30	16	18.0	6.0	2
P0400.080-016-BR	M 8	16	30	16	18.0	6.0	2
P0400.080-020-BR	M 8	20	30	16	18.0	6.0	2
P0400.080-025-BR	M 8	25	30	16	18.0	6.0	2

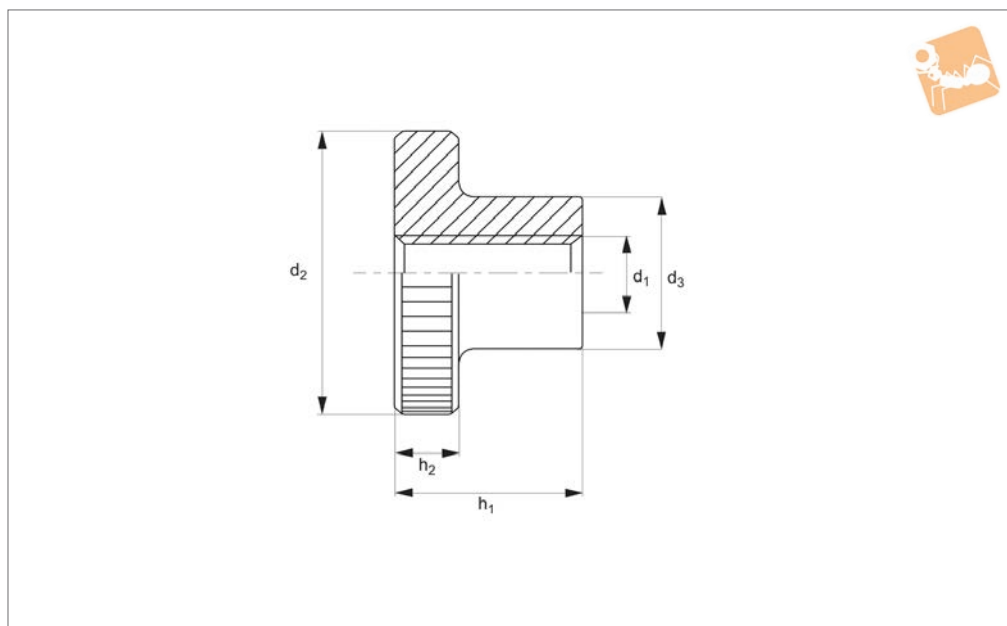
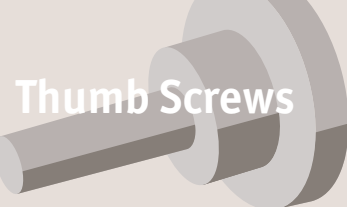


Order No.	d ₁	l ₁	d ₂	d ₃	h ₁	h ₂	l ₂
P0400.080-030-BR	M 8	30	30	16	18.0	6.0	2
P0400.080-040-BR	M 8	40	30	16	18.0	6.0	2



Knurled Thumb Nuts

With collar - A4 stainless



P0403.A4

THUMB SCREWS

Material

Stainless steel (A4, AISI 316).

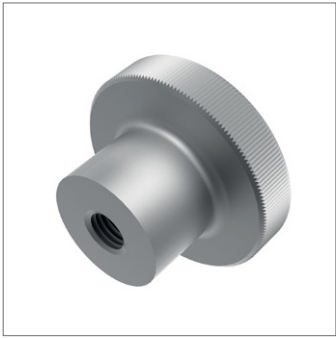
Technical Notes

To DIN 466, size M12 not contained in DIN standard.

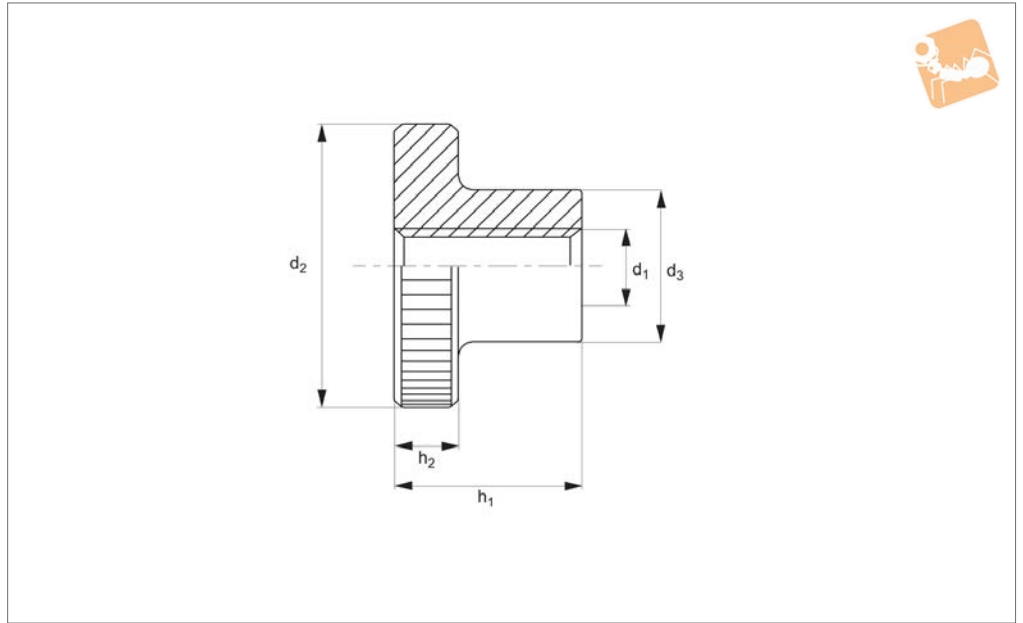
Order No.	d ₁	d ₂	d ₃	h ₁	h ₂	Material	Weight g
P0403.020-A4	M 2	9	4.5	5.3	2	A4 s/s	3
P0403.025-A4	M2,5	11	5	6.5	2.5	A4 s/s	4
P0403.030-A4	M 3	12	6	7.5	2.5	A4 s/s	5
P0403.040-A4	M 4	16	8	9.5	3.5	A4 s/s	7
P0403.050-A4	M 5	20	10	11.5	4	A4 s/s	13
P0403.060-A4	M 6	24	12	15	5	A4 s/s	24
P0403.080-A4	M 8	30	16	18	6	A4 s/s	46
P0403.100-A4	M10	36	20	23	8	A4 s/s	62



THUMB SCREWS



P0403.A2



Material

Stainless steel (A2, AISI 303).

Technical Notes

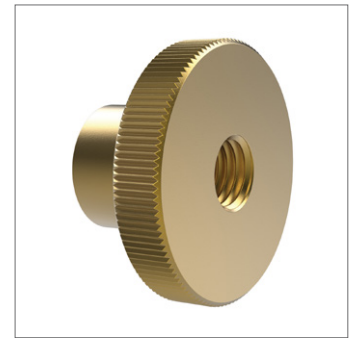
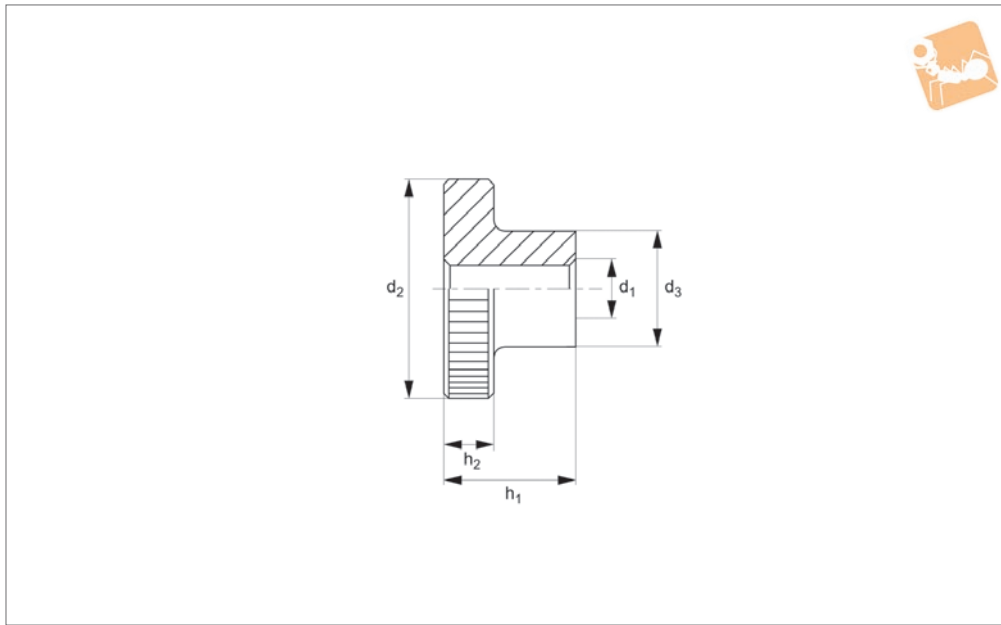
To DIN 466, size M12 not contained in DIN standard.

Order No.	d ₁	d ₂	d ₃	h ₁	h ₂	Material	Weight g
P0403.020-A2	M 2	9	4.5	5.3	2	A2 s/s	3
P0403.025-A2	M2,5	11	5	6.5	2.5	A2 s/s	4
P0403.030-A2	M 3	12	6	7.5	2.5	A2 s/s	5
P0403.040-A2	M 4	16	8	9.5	3.5	A2 s/s	7
P0403.050-A2	M 5	20	10	11.5	4	A2 s/s	13
P0403.060-A2	M 6	24	12	15	5	A2 s/s	24
P0403.080-A2	M 8	30	16	18	6	A2 s/s	46
P0403.100-A2	M10	36	20	23	8	A2 s/s	62



Brass Knurled Nuts

DIN 466



P0403.BR

THUMB SCREWS

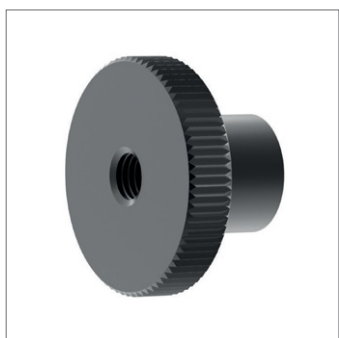
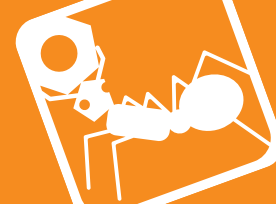
Material

Brass, Cu3 (CuZn39Pb3).

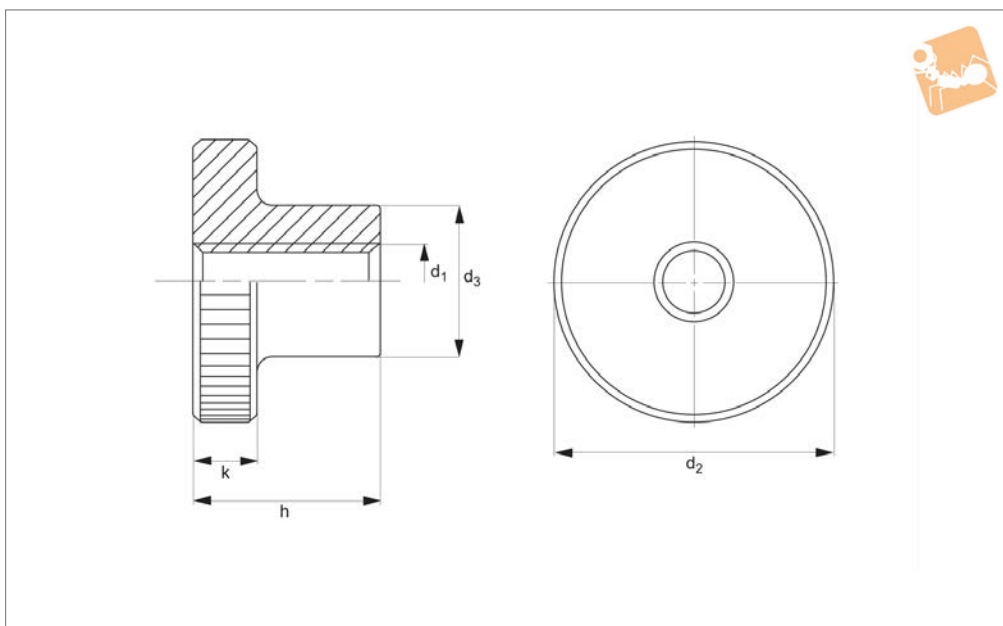
Technical Notes

To DIN 466, size M12 not contained in DIN standard.

Order No.	Thread	d ₂	d ₃	h ₁	h ₂	Material	Finish	Weight g
P0403.060-BR	M 6	24	12	15	5.0	Brass	Self colour/Unfinished	24



P0403.BL



Material

Steel, quality 5, blackened. Turned, visible face, good finish.

Technical Notes

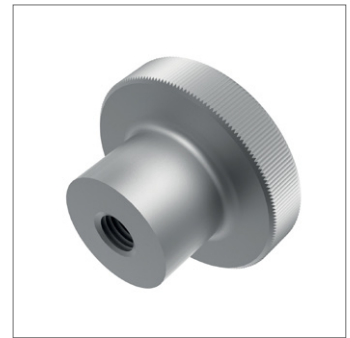
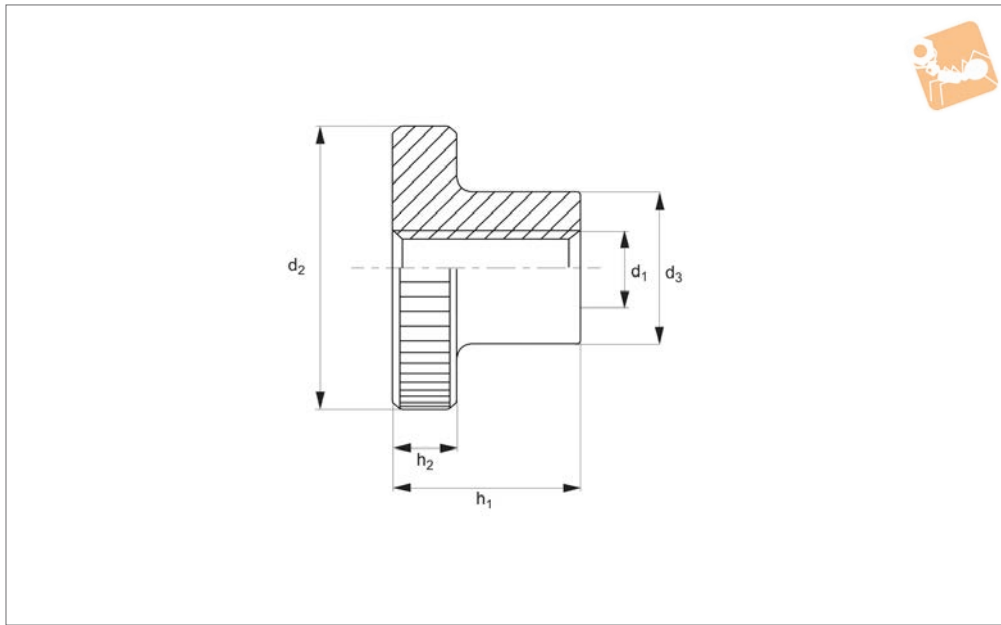
Size M12 not contained in DIN standard.

Order No.	d_1	d_2	d_3	h	k	Weight g
P0403.030-BL	M 3	12	6	7.5	2.5	2.9
P0403.040-BL	M 4	16	8	9.5	3.5	6.7
P0403.050-BL	M 5	20	10	11.5	4.0	12.0
P0403.060-BL	M 6	24	12	15.0	5.0	23.0
P0403.080-BL	M 8	30	16	18.0	6.0	44.0
P0403.100-BL	M10	36	20	23.0	8.0	85.0
P0403.120-BL	M12	40	22	25.0	10.0	119.0



Knurled Thumb Nuts

With collar - zinc-plated



P0403.ZP

THUMB SCREWS

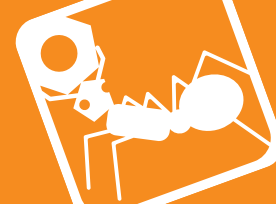
Material

Steel (class 5.8), zinc-plated.

Technical Notes

To DIN 466, size M12 not contained in DIN standard.

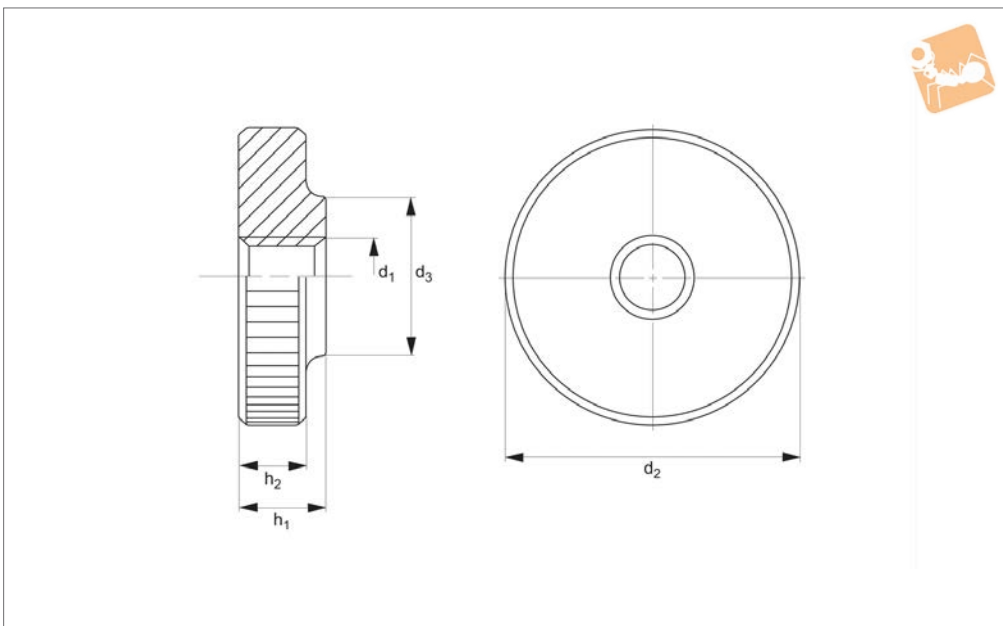
Order No.	d ₁	d ₂	d ₃	h ₁	h ₂	Material	Weight g
P0403.030-ZP	M 3	12	6	7.5	2.5	Steel ZP	3
P0403.040-ZP	M 4	16	8	9.5	3.5	Steel ZP	7
P0403.050-ZP	M 5	20	10	11.5	4.0	Steel ZP	13
P0403.060-ZP	M 6	24	12	15.0	5.0	Steel ZP	24
P0403.080-ZP	M 8	30	16	18.0	6.0	Steel ZP	46
P0403.100-ZP	M10	36	20	23.0	8.0	Steel ZP	83



THUMB SCREWS



P0406.A2



Material

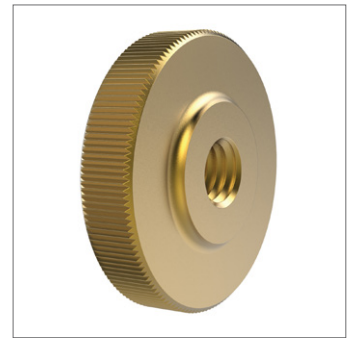
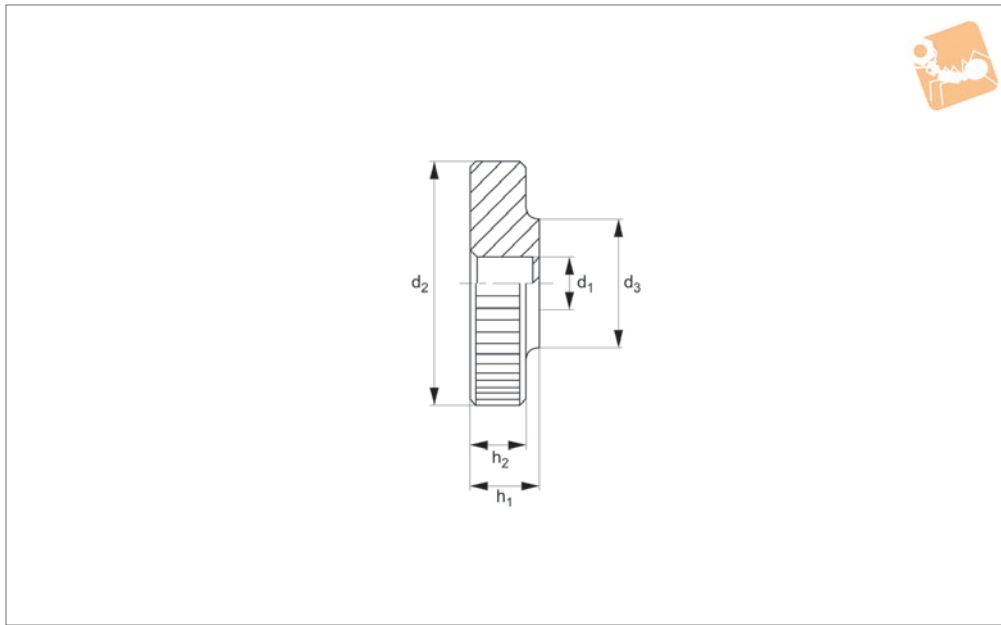
Stainless steel 1,4305 (AISI 303), dull blasted.

Order No.	d_1	d_2	d_3	h_1	h_2	Weight g
P0406.040-A2	M 4	16	8	4	3.5	5.0
P0406.050-A2	M 5	20	10	5	4.0	9.4
P0406.060-A2	M 6	24	12	6	5.0	17.0
P0406.080-A2	M 8	30	16	8	6.0	32.0



Brass Flat Knurled Nuts

DIN 467



P0406.BR

THUMB SCREWS

Material

Brass, Cu3 (CuZn39Pb3).

Technical Notes

To DIN 467, size M12 not contained in DIN standard.

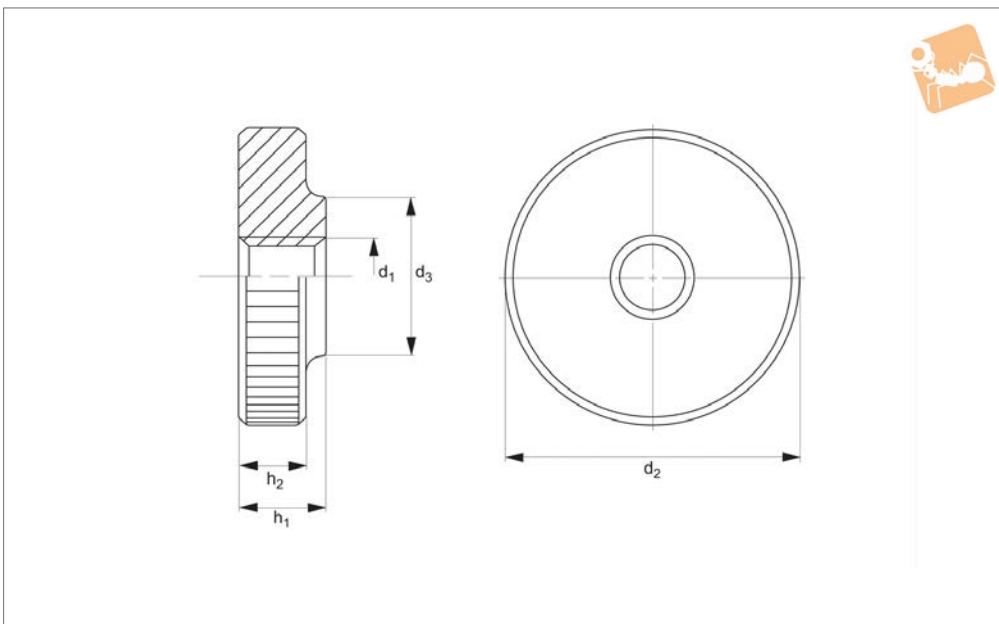
Order No.	Thread	d_2	d_3	h_1	h_2	Material	Finish	Weight g
P0406.040-BR	M 4	16.0	8.0	4.0	3.5	Brass	Self colour/Unfinished	5.0



THUMB SCREWS



P0406.BL



Material

Steel, quality 5, blackened. Turned, visible face, good finish.

Technical Notes

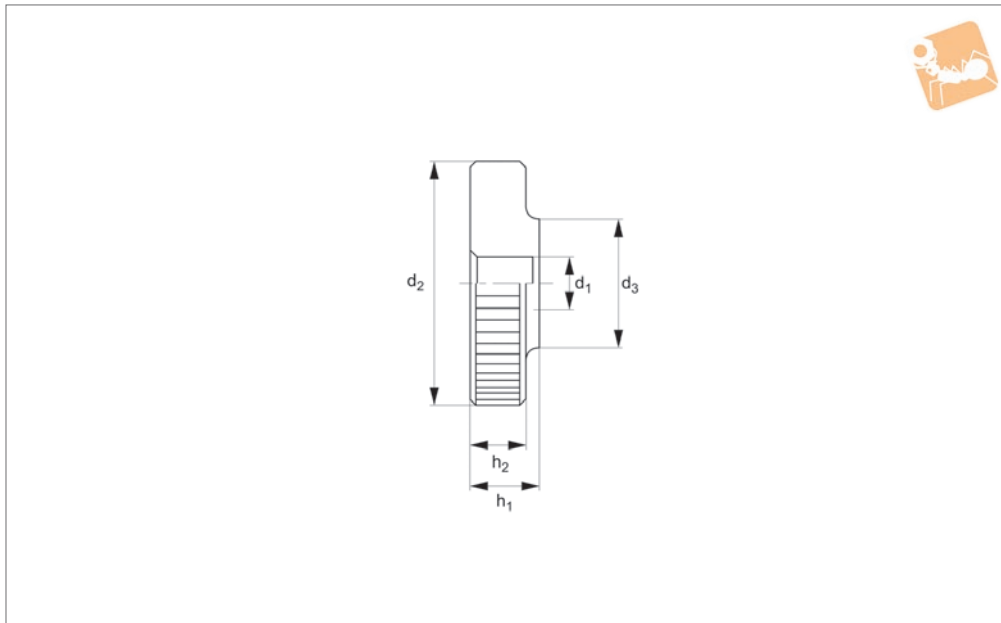
Size M12 not contained in DIN standard.

Order No.	d ₁	d ₂	d ₃	h ₁	h ₂	Weight g
P0406.030-BL	M 3	12	6	3	2.5	2.1
P0406.040-BL	M 4	16	8	4	3.5	5.0
P0406.050-BL	M 5	20	10	5	4.0	9.4
P0406.060-BL	M 6	24	12	6	5.0	17.0
P0406.080-BL	M 8	30	16	8	6.0	32.0
P0406.100-BL	M10	36	20	10	8.0	61.0
P0406.120-BL	M12	40	22	12	10.0	92.0



Flat Knurled Thumb Nuts

Flat - zinc-plated



P0406.ZP

THUMB SCREWS

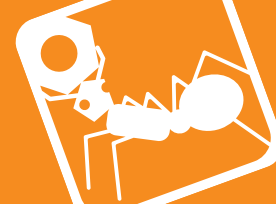
Material

Steel (class 5.8), zinc-plated.

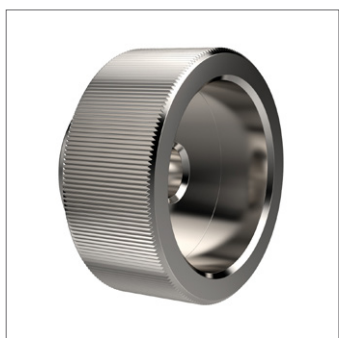
Technical Notes

To DIN 467, size M12 not contained in DIN standard.

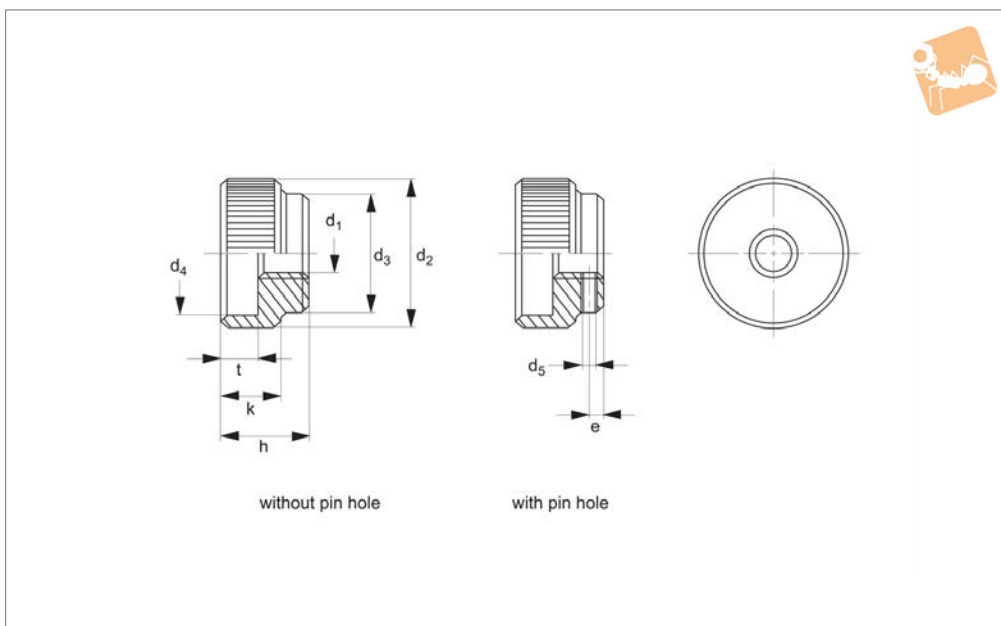
Order No.	d_1	d_2	d_3	h_1	h_2	Material	Weight g
P0406.030-ZP	M 3	12.0	6.0	3.0	2.5	Steel ZP	2.0
P0406.040-ZP	M 4	16.0	8.0	4.0	3.5	Steel ZP	5.0
P0406.050-ZP	M 5	20.0	10.0	5.0	4.0	Steel ZP	10.0
P0406.060-ZP	M 6	24.0	12.0	6.0	5.0	Steel ZP	17.0
P0406.080-ZP	M 8	30.0	16.0	8.0	6.0	Steel ZP	33.0
P0406.100-ZP	M10	36.0	20.0	10.0	8.0	Steel ZP	63.0
P0406.120-ZP	M12	40.0	22.0	12.0	10.0	Steel ZP	93.0



THUMB SCREWS



P0409.A2



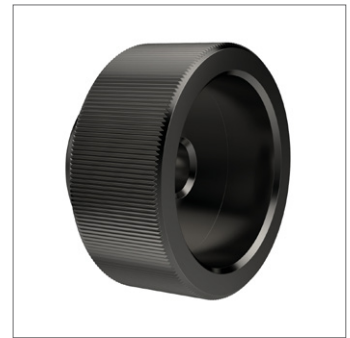
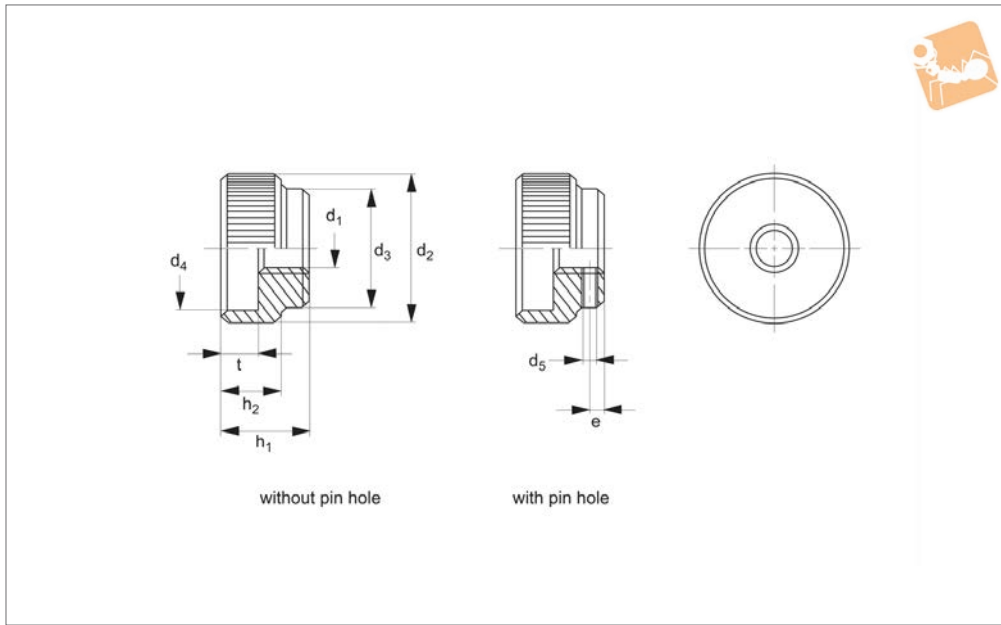
Material

Stainless steel 1.4305 (AISI 303), matte, shot-blasted.

Technical Notes

Tolerance of pin hole d_5 is H7.

Order No.	Type	d_1	d_2	d_3	d_4	d_5 pre-drilled	e	h	k	t	Pin required DIN 7	Weight g
P0409.050-A2	Without Pin Hole	M 5	20	14	15	-	-	12	8	5	-	16
P0409.006-A2	Without Pin Hole	M 6	24	16	18	-	-	14	10	6	-	27
P0409.080-A2	Without Pin Hole	M 8	30	20	24	-	-	17	12	7	-	46
P0409.100-A2	Without Pin Hole	M10	36	28	30	-	-	20	14	8	-	82
P0409.120-A2	Without Pin Hole	M12	40	32	34	-	-	24	16	10	-	123
P0409.050-A2-W	With Pin Hole	M 5	20	14	15	1.4	2.5	12	8	5	1,5 M 6x14	15
P0409.060-A2-W	With Pin Hole	M 6	24	16	18	1.4	2.5	14	10	6	1,5 M 6x16	25
P0409.080-A2-W	With Pin Hole	M 8	30	20	24	1.9	3.0	17	12	7	2,0 M 6x20	45
P0409.100-A2-W	With Pin Hole	M10	36	28	30	2.9	4.0	20	14	8	3,0 M 6x28	86
P0409.120-A2-W	With Pin Hole	M12	40	32	34	3.9	4.0	24	16	10	4,0 M 6x32	121



P0409.BL

THUMB SCREWS

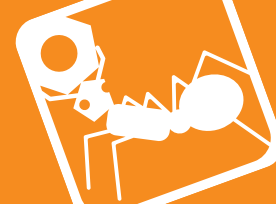
Material

Free-cutting steel, blackened.

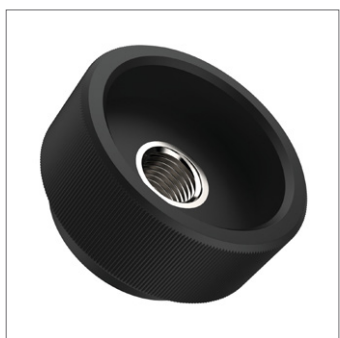
Technical Notes

Tolerance of pin hole d_5 is H7.

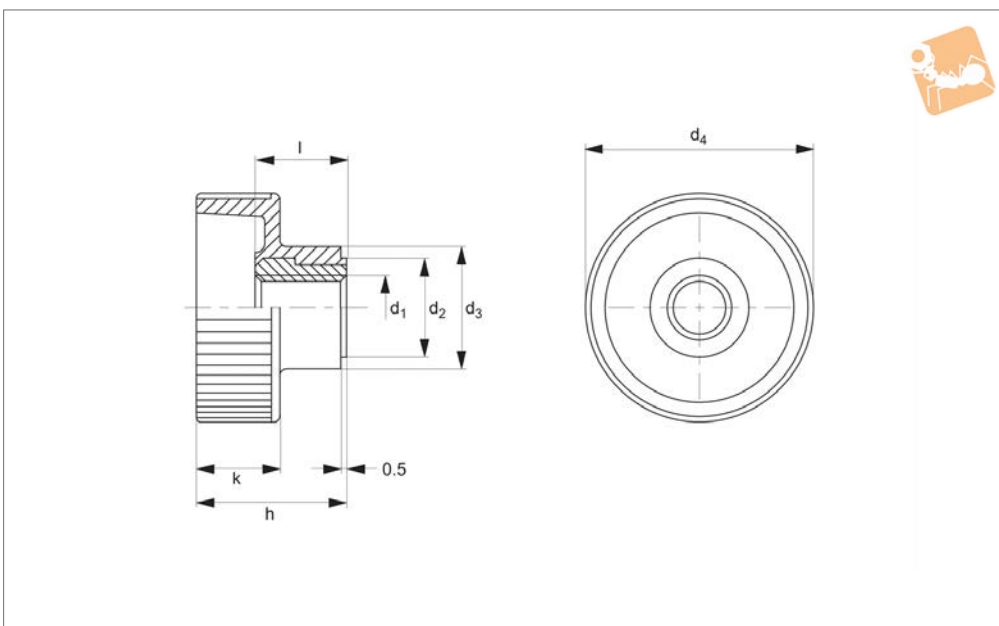
Order No.	Type	d_1	d_2	d_3	d_4	d_5 pre-drilled	e	h_1	h_2	t	Pin required DIN 7	Weight g
P0409.050-BL	Without Pin Hole	M 5	20	14	15	-	-	12	8	5	-	16
P0409.060-BL	Without Pin Hole	M 6	24	16	18	-	-	14	10	6	-	27
P0409.080-BL	Without Pin Hole	M 8	30	20	24	-	-	17	12	7	-	46
P0409.100-BL	Without Pin Hole	M10	36	28	30	-	-	20	14	8	-	82
P0409.120-BL	Without Pin Hole	M12	40	32	34	-	-	24	16	10	-	123
P0409.050-BL-W	With Pin Hole	M 5	20	14	15	1.4	2.5	12	8	5	1,5 M 6x14	15
P0409.060-BL-W	With Pin Hole	M 6	24	16	18	1.4	2.5	14	10	6	1,5 M 6x16	25
P0409.080-BL-W	With Pin Hole	M 8	30	20	24	1.9	3.0	17	12	7	2,0 M 6x20	45
P0409.100-BL-W	With Pin Hole	M10	36	28	30	2.9	4.0	20	14	8	3,0 M 6x28	86
P0409.120-BL-W	With Pin Hole	M12	40	32	34	3.9	4.0	24	16	10	4,0 M 6x32	121



THUMB SCREWS



P0441



Material

Body: thermoplastic (PA), black. Insert: steel, galvanised or stainless steel 1.4305

(AISI 303).

80°C.

Technical Notes

Temperature resistant from -30°C to +

Order No.	Type	d ₁	d ₂	d ₃	d ₄	h	k	l	Weight g
P0441.040-ZP	Steel Insert	M 4	9	12	19	14.0	8.0	9.0	4.5
P0441.050-ZP	Steel Insert	M 5	9	12	19	14.0	8.0	9.0	4.0
P0441.060-ZP	Steel Insert	M 6	12	14	24	16.5	9.5	10.5	7.0
P0441.080-ZP	Steel Insert	M 8	14	16	30	19.5	11.0	11.5	10.0
P0441.100-ZP	Steel Insert	M10	16	18	36	22.5	12.5	14.0	15.0
P0441.050-A2	Stainless Insert	M 5	9	12	19	14.0	8.0	9.0	4.0
P0441.060-A2	Stainless Insert	M 6	12	14	24	16.5	9.5	10.5	7.0
P0441.080-A2	Stainless Insert	M 8	14	16	30	19.5	11.0	11.5	10.0

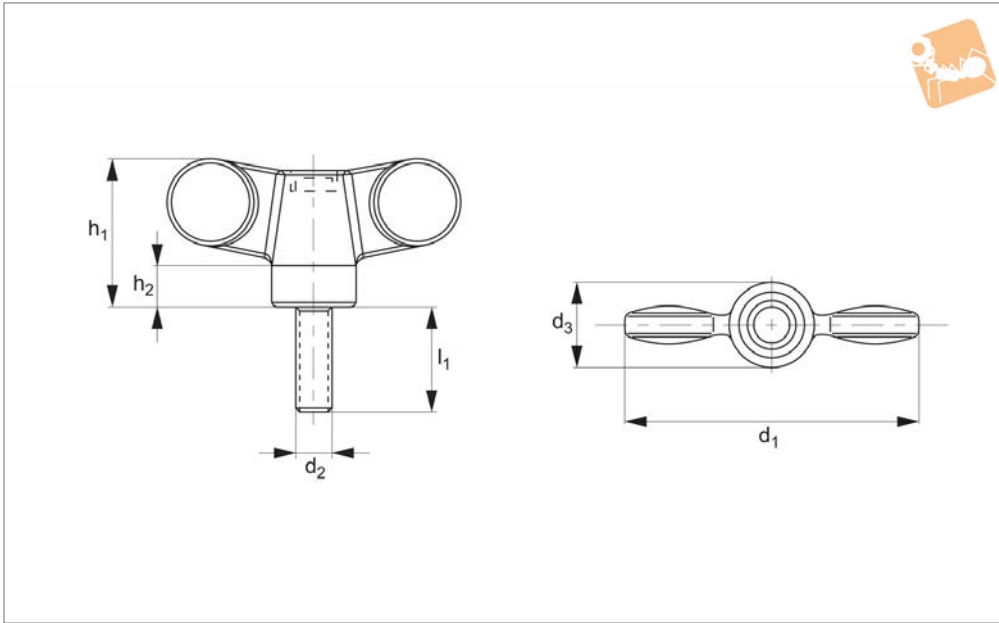


Wing Nut

plastic, with grub screw and colour insert



Thumb Screws



P0481

THUMB SCREWS

Material

Thermoplastic black.
Plastic insert: black RAL9005, red

RAL3000, blue RAL 5019.

subject to minimum quantity.

Tips

Other colour inserts available on request,

Order No.	Insert colour	d ₁	d ₂	d ₃	h ₁	h ₂	l ₁	Weight g
P0481.10-28-20	Black	55	M10	16	28	8	20	30