

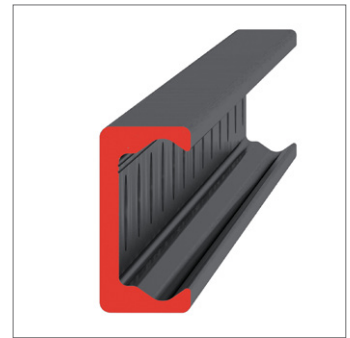
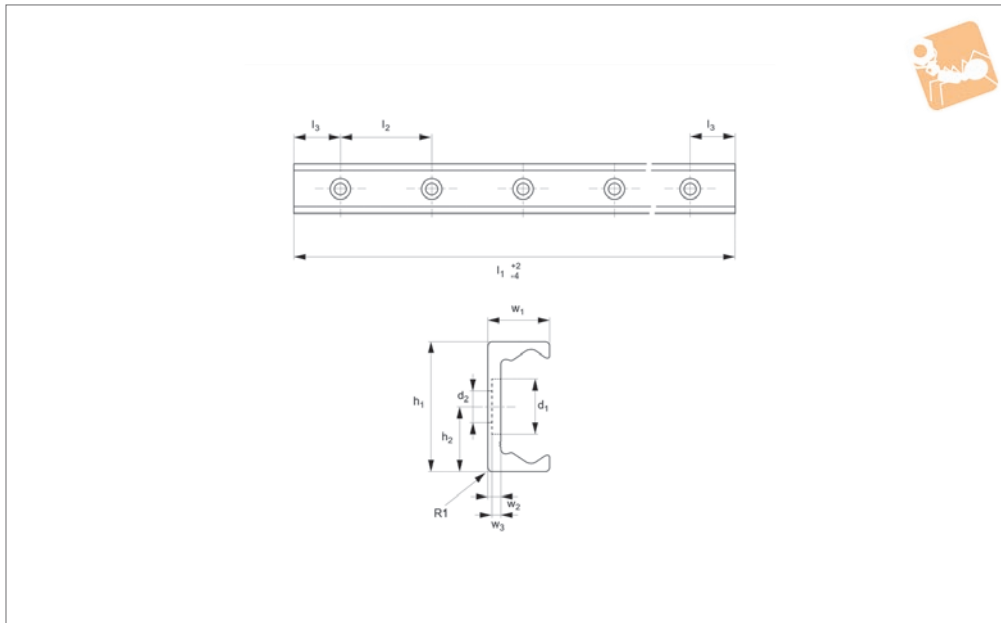


Medium Duty T Rail

counterbored holes



Long Linear
Rails



L1928.TLC28

LONG LINEAR RAILS

Material

Carbon steel. Raceways induction hardened and ground.
Electrolytic zinc-plated (excluding raceways).

Technical Notes

The T rail is a master rail and is usually

used with a U slave rail (allows for system misalignment).

This is the counterbored rail type (most popular), which is usually used with a corresponding ULC rail.
Special low profile Torx head screws provided free of charge.

Weight: 1,0 Kg/m.

Tips

Standard carriages are the L1928.N versions (die cast aluminium alloy with wipers). Alternatively the L1928.C type is also available (without wipers).

Order No.	d ₁	d ₂	h ₁	h ₂	l ₁	l ₂	l ₃	r ₁	w ₁	w ₂	w ₃
L1928.TLC28-0240	11	M5	28	14	240	80	40	1	12.3	3	2
L1928.TLC28-0320	11	M5	28	14	320	80	40	1	12.3	3	2
L1928.TLC28-0400	11	M5	28	14	400	80	40	1	12.3	3	2
L1928.TLC28-0480	11	M5	28	14	480	80	40	1	12.3	3	2
L1928.TLC28-0560	11	M5	28	14	560	80	40	1	12.3	3	2
L1928.TLC28-0640	11	M5	28	14	640	80	40	1	12.3	3	2
L1928.TLC28-0720	11	M5	28	14	720	80	40	1	12.3	3	2
L1928.TLC28-0800	11	M5	28	14	800	80	40	1	12.3	3	2
L1928.TLC28-0880	11	M5	28	14	880	80	40	1	12.3	3	2
L1928.TLC28-0960	11	M5	28	14	960	80	40	1	12.3	3	2
L1928.TLC28-1040	11	M5	28	14	1040	80	40	1	12.3	3	2
L1928.TLC28-1120	11	M5	28	14	1120	80	40	1	12.3	3	2
L1928.TLC28-1200	11	M5	28	14	1200	80	40	1	12.3	3	2
L1928.TLC28-1280	11	M5	28	14	1280	80	40	1	12.3	3	2
L1928.TLC28-1360	11	M5	28	14	1360	80	40	1	12.3	3	2
L1928.TLC28-1440	11	M5	28	14	1440	80	40	1	12.3	3	2
L1928.TLC28-1520	11	M5	28	14	1520	80	40	1	12.3	3	2
L1928.TLC28-1600	11	M5	28	14	1600	80	40	1	12.3	3	2
L1928.TLC28-1680	11	M5	28	14	1680	80	40	1	12.3	3	2
L1928.TLC28-1760	11	M5	28	14	1760	80	40	1	12.3	3	2
L1928.TLC28-1840	11	M5	28	14	1840	80	40	1	12.3	3	2
L1928.TLC28-1920	11	M5	28	14	1920	80	40	1	12.3	3	2
L1928.TLC28-2000	11	M5	28	14	2000	80	40	1	12.3	3	2
L1928.TLC28-2080	11	M5	28	14	2080	80	40	1	12.3	3	2
L1928.TLC28-2160	11	M5	28	14	2160	80	40	1	12.3	3	2
L1928.TLC28-2240	11	M5	28	14	2240	80	40	1	12.3	3	2
L1928.TLC28-2320	11	M5	28	14	2320	80	40	1	12.3	3	2
L1928.TLC28-2400	11	M5	28	14	2400	80	40	1	12.3	3	2
L1928.TLC28-2480	11	M5	28	14	2480	80	40	1	12.3	3	2
L1928.TLC28-2560	11	M5	28	14	2560	80	40	1	12.3	3	2
L1928.TLC28-2640	11	M5	28	14	2640	80	40	1	12.3	3	2

Long Linear Rails

Medium Duty T Rail counterbored holes



Order No.	d ₁	d ₂	h ₁	h ₂	l ₁	l ₂	l ₃	r ₁	w ₁	w ₂	w ₃
L1928.TLC28-2720	11	M5	28	14	2720	80	40	1	12.3	3	2
L1928.TLC28-2800	11	M5	28	14	2800	80	40	1	12.3	3	2
L1928.TLC28-2880	11	M5	28	14	2880	80	40	1	12.3	3	2
L1928.TLC28-2960	11	M5	28	14	2960	80	40	1	12.3	3	2
L1928.TLC28-3040	11	M5	28	14	3040	80	40	1	12.3	3	2
L1928.TLC28-3120	11	M5	28	14	3120	80	40	1	12.3	3	2
L1928.TLC28-3200	11	M5	28	14	3200	80	40	1	12.3	3	2

LONG LINEAR RAILS