

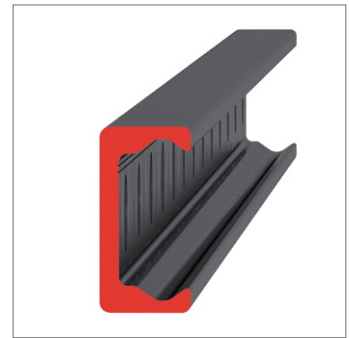
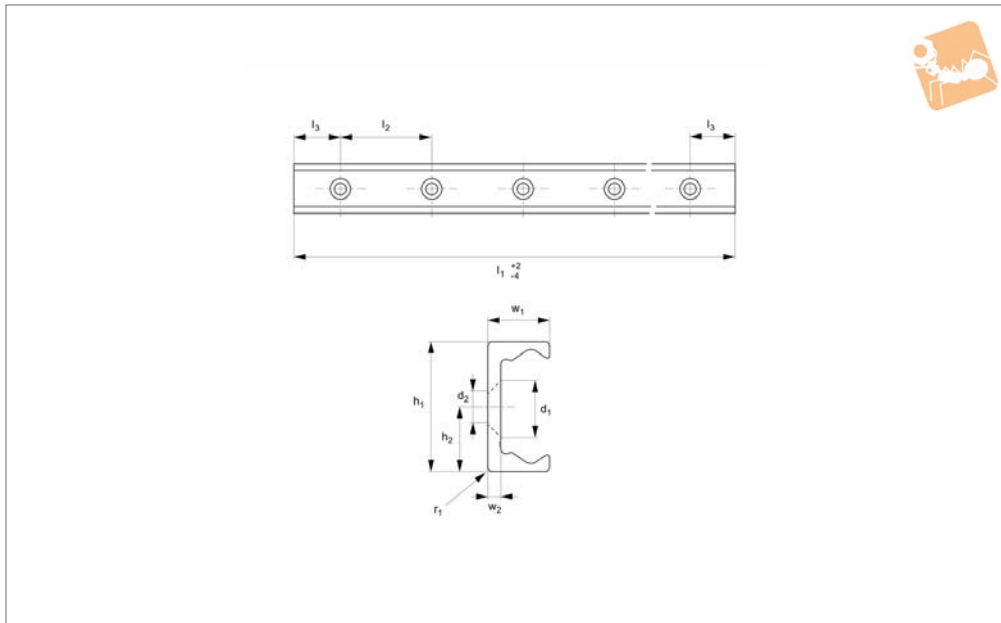


Medium Duty T Rail

countersunk holes



Long Linear Rails



L1928.TLV28

LONG LINEAR RAILS

Material

Carbon steel. Raceways induction hardened and ground.
Electrolytic zinc-plated (excluding raceways).

Technical Notes

The T rail is a master rail and is usually

used with a U slave rail (allows for misalignment).
This is the TLV countersunk rail which is usually used with a corresponding ULV rail.
For fixing use countersunk DIN 7991 screws.
Weight: 1,0 Kg/m.

Tips

Standard carriages are the L1928.N versions (die cast aluminium alloy with wipers). Alternatively the L1928.C type is also available (without wipers).

Order No.	d ₂	h ₁	h ₂	l ₁	l ₂	l ₃	r ₁	w ₁	w ₂
L1928.TLV28-0240	M5	28	14	240	80	40	1	12.3	3
L1928.TLV28-0320	M5	28	14	320	80	40	1	12.3	3
L1928.TLV28-0400	M5	28	14	400	80	40	1	12.3	3
L1928.TLV28-0480	M5	28	14	480	80	40	1	12.3	3
L1928.TLV28-0560	M5	28	14	560	80	40	1	12.3	3
L1928.TLV28-0640	M5	28	14	640	80	40	1	12.3	3
L1928.TLV28-0720	M5	28	14	720	80	40	1	12.3	3
L1928.TLV28-0800	M5	28	14	800	80	40	1	12.3	3
L1928.TLV28-0880	M5	28	14	880	80	40	1	12.3	3
L1928.TLV28-0960	M5	28	14	960	80	40	1	12.3	3
L1928.TLV28-1040	M5	28	14	1040	80	40	1	12.3	3
L1928.TLV28-1120	M5	28	14	1120	80	40	1	12.3	3
L1928.TLV28-1200	M5	28	14	1200	80	40	1	12.3	3
L1928.TLV28-1280	M5	28	14	1280	80	40	1	12.3	3
L1928.TLV28-1360	M5	28	14	1360	80	40	1	12.3	3
L1928.TLV28-1440	M5	28	14	1440	80	40	1	12.3	3
L1928.TLV28-1520	M5	28	14	1520	80	40	1	12.3	3
L1928.TLV28-1600	M5	28	14	1600	80	40	1	12.3	3
L1928.TLV28-1680	M5	28	14	1680	80	40	1	12.3	3
L1928.TLV28-1760	M5	28	14	1760	80	40	1	12.3	3
L1928.TLV28-1840	M5	28	14	1840	80	40	1	12.3	3
L1928.TLV28-1920	M5	28	14	1920	80	40	1	12.3	3
L1928.TLV28-2000	M5	28	14	2000	80	40	1	12.3	3
L1928.TLV28-2080	M5	28	14	2080	80	40	1	12.3	3
L1928.TLV28-2160	M5	28	14	2160	80	40	1	12.3	3
L1928.TLV28-2240	M5	28	14	2240	80	40	1	12.3	3
L1928.TLV28-2320	M5	28	14	2320	80	40	1	12.3	3
L1928.TLV28-2400	M5	28	14	2400	80	40	1	12.3	3
L1928.TLV28-2480	M5	28	14	2480	80	40	1	12.3	3
L1928.TLV28-2560	M5	28	14	2560	80	40	1	12.3	3
L1928.TLV28-2640	M5	28	14	2640	80	40	1	12.3	3



Order No.	d ₂	h ₁	h ₂	l ₁	l ₂	l ₃	r ₁	w ₁	w ₂
L1928.TLV28-2720	M5	28	14	2720	80	40	1	12.3	3
L1928.TLV28-2800	M5	28	14	2800	80	40	1	12.3	3
L1928.TLV28-2880	M5	28	14	2880	80	40	1	12.3	3
L1928.TLV28-2960	M5	28	14	2960	80	40	1	12.3	3
L1928.TLV28-3040	M5	28	14	3040	80	40	1	12.3	3
L1928.TLV28-3120	M5	28	14	3120	80	40	1	12.3	3
L1928.TLV28-3200	M5	28	14	3200	80	40	1	12.3	3