

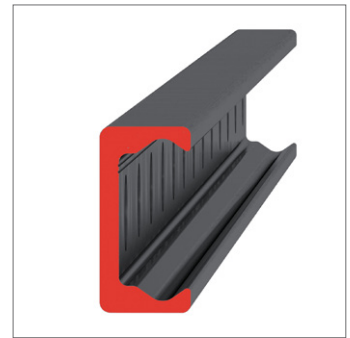
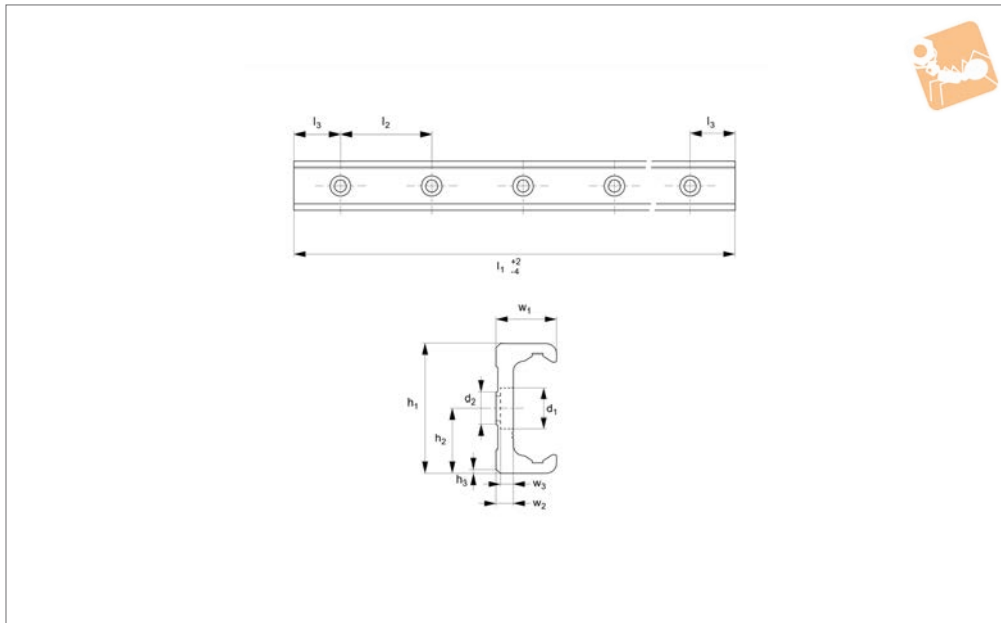


# Very Heavy Duty T Rail

counterbored holes



Long Linear  
Rails



**L1963.63T-C**

LONG LINEAR RAILS

**Material**

Carbon steel. Raceways induction hardened and ground.  
Electrolytic zinc-plated (excluding raceways).

**Technical Notes**

The T rail is a master rail and is usually

used with a U slave rail (allows for system misalignment).

This is the counterbored rail type (most popular), which is usually used with a corresponding ULC rail.  
Special low profile Torx head screws provided free of charge.

Weight: 6,0 Kg/m.

**Tips**

Standard carriages are the L1963.N versions (die cast aluminium alloy with wipers). Alternatively the L1963.C type is also available (without wipers).

Order No.	d <sub>1</sub>	d <sub>2</sub> for screws	h <sub>1</sub>	h <sub>2</sub>	h <sub>3</sub>	l <sub>1</sub>	l <sub>2</sub>	l <sub>3</sub>	w <sub>1</sub>	w <sub>2</sub>	w <sub>3</sub>
L1963.63T-0560-C	15	M8	63	31.5	2x45°	560	80	40	28	8	5.2
L1963.63T-0640-C	15	M8	63	31.5	2x45°	640	80	40	28	8	5.2
L1963.63T-0720-C	15	M8	63	31.5	2x45°	720	80	40	28	8	5.2
L1963.63T-0800-C	15	M8	63	31.5	2x45°	800	80	40	28	8	5.2
L1963.63T-0880-C	15	M8	63	31.5	2x45°	880	80	40	28	8	5.2
L1963.63T-0960-C	15	M8	63	31.5	2x45°	960	80	40	28	8	5.2
L1963.63T-1040-C	15	M8	63	31.5	2x45°	1040	80	40	28	8	5.2
L1963.63T-1120-C	15	M8	63	31.5	2x45°	1120	80	40	28	8	5.2
L1963.63T-1200-C	15	M8	63	31.5	2x45°	1200	80	40	28	8	5.2
L1963.63T-1280-C	15	M8	63	31.5	2x45°	1280	80	40	28	8	5.2
L1963.63T-1360-C	15	M8	63	31.5	2x45°	1360	80	40	28	8	5.2
L1963.63T-1440-C	15	M8	63	31.5	2x45°	1440	80	40	28	8	5.2
L1963.63T-1520-C	15	M8	63	31.5	2x45°	1520	80	40	28	8	5.2
L1963.63T-1600-C	15	M8	63	31.5	2x45°	1600	80	40	28	8	5.2
L1963.63T-1680-C	15	M8	63	31.5	2x45°	1680	80	40	28	8	5.2
L1963.63T-1760-C	15	M8	63	31.5	2x45°	1760	80	40	28	8	5.2
L1963.63T-1840-C	15	M8	63	31.5	2x45°	1840	80	40	28	8	5.2
L1963.63T-1920-C	15	M8	63	31.5	2x45°	1920	80	40	28	8	5.2
L1963.63T-2000-C	15	M8	63	31.5	2x45°	2000	80	40	28	8	5.2
L1963.63T-2080-C	15	M8	63	31.5	2x45°	2080	80	40	28	8	5.2
L1963.63T-2160-C	15	M8	63	31.5	2x45°	2160	80	40	28	8	5.2
L1963.63T-2240-C	15	M8	63	31.5	2x45°	2240	80	40	28	8	5.2
L1963.63T-2320-C	15	M8	63	31.5	2x45°	2320	80	40	28	8	5.2
L1963.63T-2400-C	15	M8	63	31.5	2x45°	2400	80	40	28	8	5.2
L1963.63T-2480-C	15	M8	63	31.5	2x45°	2480	80	40	28	8	5.2
L1963.63T-2560-C	15	M8	63	31.5	2x45°	2560	80	40	28	8	5.2
L1963.63T-2640-C	15	M8	63	31.5	2x45°	2640	80	40	28	8	5.2
L1963.63T-2720-C	15	M8	63	31.5	2x45°	2720	80	40	28	8	5.2
L1963.63T-2800-C	15	M8	63	31.5	2x45°	2800	80	40	28	8	5.2
L1963.63T-2880-C	15	M8	63	31.5	2x45°	2880	80	40	28	8	5.2
L1963.63T-2960-C	15	M8	63	31.5	2x45°	2960	80	40	28	8	5.2



Order No.	d <sub>1</sub>	d <sub>2</sub> for screws	h <sub>1</sub>	h <sub>2</sub>	h <sub>3</sub>	l <sub>1</sub>	l <sub>2</sub>	l <sub>3</sub>	w <sub>1</sub>	w <sub>2</sub>	w <sub>3</sub>
L1963.63T-3040-C	15	M8	63	31.5	2x45°	3040	80	40	28	8	5.2
L1963.63T-3120-C	15	M8	63	31.5	2x45°	3120	80	40	28	8	5.2
L1963.63T-3200-C	15	M8	63	31.5	2x45°	3200	80	40	28	8	5.2
L1963.63T-3280-C	15	M8	63	31.5	2x45°	3280	80	40	28	8	5.2
L1963.63T-3360-C	15	M8	63	31.5	2x45°	3360	80	40	28	8	5.2
L1963.63T-3440-C	15	M8	63	31.5	2x45°	3440	80	40	28	8	5.2
L1963.63T-3520-C	15	M8	63	31.5	2x45°	3520	80	40	28	8	5.2
L1963.63T-3600-C	15	M8	63	31.5	2x45°	3600	80	40	28	8	5.2
L1963.63T-3680-C	15	M8	63	31.5	2x45°	3680	80	40	28	8	5.2
L1963.63T-3760-C	15	M8	63	31.5	2x45°	3760	80	40	28	8	5.2
L1963.63T-3840-C	15	M8	63	31.5	2x45°	3840	80	40	28	8	5.2
L1963.63T-3920-C	15	M8	63	31.5	2x45°	3920	80	40	28	8	5.2
L1963.63T-4000-C	15	M8	63	31.5	2x45°	4000	80	40	28	8	5.2
L1963.63T-4080-C	15	M8	63	31.5	2x45°	4080	80	40	28	8	5.2