

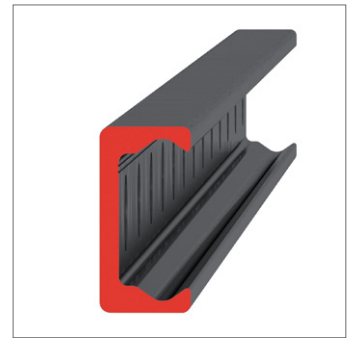
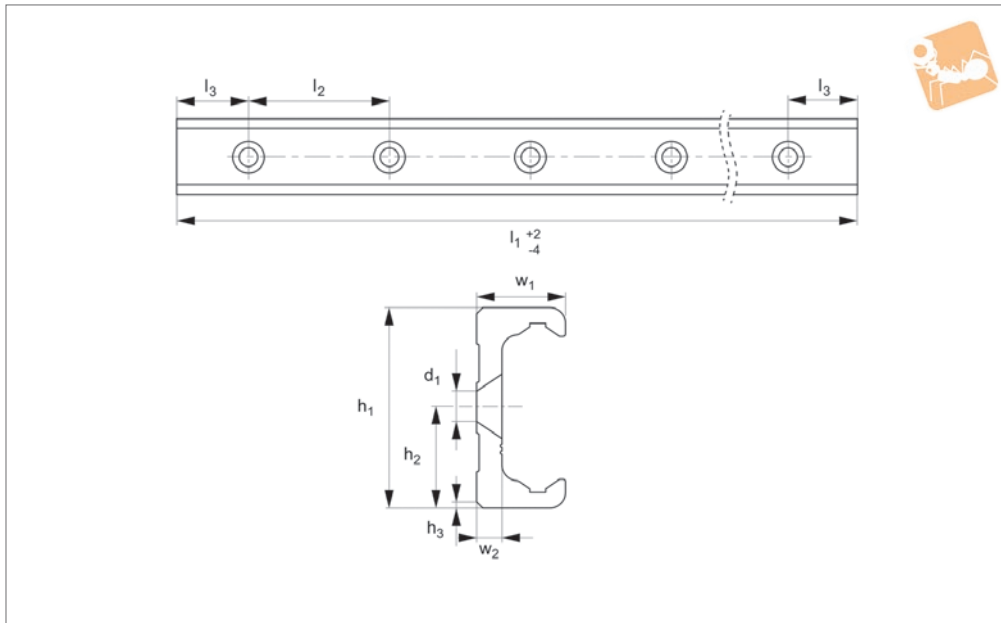


Very Heavy Duty T Rail

countersunk holes



Long Linear
Rails



L1963.63T-V

LONG LINEAR RAILS

Material

Carbon steel. Raceways induction hardened and ground.
Electrolytic zinc-plated (excluding raceways).

Technical Notes

The T rail is a master rail and is usually

used with a U slave rails (allows for misalignment).

This is the TLV countersunk rail which is usually used with a corresponding ULV rail. For fixing use countersunk DIN 7991 screws.

Weight: 6,0 Kg/m.

Tips

Standard carriages are the L1963.N versions (die cast aluminium alloy with wipers). Alternatively the L1963.C type is also available (without wipers).

Order No.	d ₁ for screw	h ₁	h ₂	h ₃	l ₁	l ₂	l ₃	w ₁	w ₂
L1963.63T-0400-V	M8	63	31.5	2x45°	400	80	40	28	8
L1963.63T-0480-V	M8	63	31.5	2x45°	480	80	40	28	8
L1963.63T-0560-V	M8	63	31.5	2x45°	560	80	40	28	8
L1963.63T-0640-V	M8	63	31.5	2x45°	640	80	40	28	8
L1963.63T-0720-V	M8	63	31.5	2x45°	720	80	40	28	8
L1963.63T-0800-V	M8	63	31.5	2x45°	800	80	40	28	8
L1963.63T-0880-V	M8	63	31.5	2x45°	880	80	40	28	8
L1963.63T-0960-V	M8	63	31.5	2x45°	960	80	40	28	8
L1963.63T-1040-V	M8	63	31.5	2x45°	1040	80	40	28	8
L1963.63T-1120-V	M8	63	31.5	2x45°	1120	80	40	28	8
L1963.63T-1200-V	M8	63	31.5	2x45°	1200	80	40	28	8
L1963.63T-1280-V	M8	63	31.5	2x45°	1280	80	40	28	8
L1963.63T-1360-V	M8	63	31.5	2x45°	1360	80	40	28	8
L1963.63T-1440-V	M8	63	31.5	2x45°	1440	80	40	28	8
L1963.63T-1520-V	M8	63	31.5	2x45°	1520	80	40	28	8
L1963.63T-1600-V	M8	63	31.5	2x45°	1600	80	40	28	8
L1963.63T-1680-V	M8	63	31.5	2x45°	1680	80	40	28	8
L1963.63T-1760-V	M8	63	31.5	2x45°	1760	80	40	28	8
L1963.63T-1840-V	M8	63	31.5	2x45°	1840	80	40	28	8
L1963.63T-1920-V	M8	63	31.5	2x45°	1920	80	40	28	8
L1963.63T-2000-V	M8	63	31.5	2x45°	2000	80	40	28	8
L1963.63T-2080-V	M8	63	31.5	2x45°	2080	80	40	28	8
L1963.63T-2160-V	M8	63	31.5	2x45°	2160	80	40	28	8
L1963.63T-2240-V	M8	63	31.5	2x45°	2240	80	40	28	8
L1963.63T-2320-V	M8	63	31.5	2x45°	2320	80	40	28	8
L1963.63T-2400-V	M8	63	31.5	2x45°	2400	80	40	28	8
L1963.63T-2480-V	M8	63	31.5	2x45°	2480	80	40	28	8
L1963.63T-2560-V	M8	63	31.5	2x45°	2560	80	40	28	8
L1963.63T-2640-V	M8	63	31.5	2x45°	2640	80	40	28	8
L1963.63T-2720-V	M8	63	31.5	2x45°	2720	80	40	28	8
L1963.63T-2800-V	M8	63	31.5	2x45°	2800	80	40	28	8



Order No.	d ₁ for screw	h ₁	h ₂	h ₃	l ₁	l ₂	l ₃	w ₁	w ₂
L1963.63T-2880-V	M8	63	31.5	2x45°	2880	80	40	28	8
L1963.63T-2960-V	M8	63	31.5	2x45°	2960	80	40	28	8
L1963.63T-3040-V	M8	63	31.5	2x45°	3040	80	40	28	8
L1963.63T-3120-V	M8	63	31.5	2x45°	3120	80	40	28	8
L1963.63T-3200-V	M8	63	31.5	2x45°	3200	80	40	28	8
L1963.63T-3280-V	M8	63	31.5	2x45°	3280	80	40	28	8
L1963.63T-3360-V	M8	63	31.5	2x45°	3360	80	40	28	8
L1963.63T-3440-V	M8	63	31.5	2x45°	3440	80	40	28	8
L1963.63T-3520-V	M8	63	31.5	2x45°	3520	80	40	28	8
L1963.63T-3600-V	M8	63	31.5	2x45°	3600	80	40	28	8
L1963.63T3680-V	M8	63	31.5	2x45°	3680	80	40	28	8
L1963.63T-3760-V	M8	63	31.5	2x45°	3760	80	40	28	8
L1963.63T-3840-V	M8	63	31.5	2x45°	3840	80	40	28	8
L1963.63T-3920-V	M8	63	31.5	2x45°	3920	80	40	28	8
L1963.63T-4000-V	M8	63	31.5	2x45°	4000	80	40	28	8
L1963.63T-4080-V	M8	63	31.5	2x45°	4080	80	40	28	8