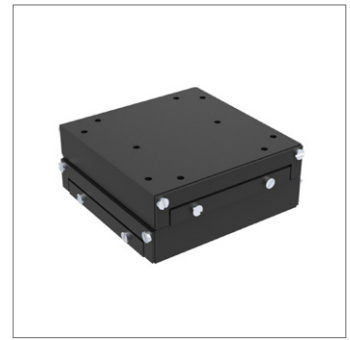




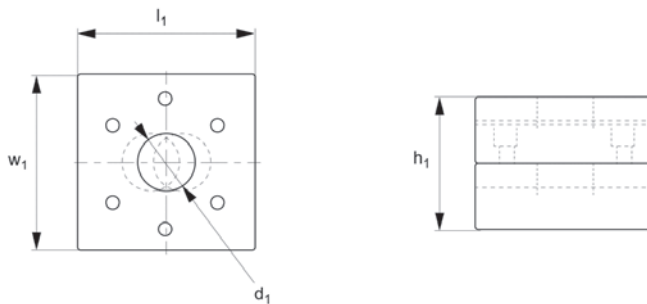
# Plain Positioning XY Stages

## XY Stage, main dimensions

# Manual Positioning Stages



## L3104



MANUAL POSITIONING STAGES

### Material

Aluminium carriage and base, black anodised steel fixing, hardened steel shafts and balls and roller elements

### Technical Notes

Ball roller versions recommended for light loads. Cross roller versions for heavier

loads and moment loads.

Straight line accuracy  $12\mu/25\text{mm}$  travel.

Repeatability  $3\mu$ .

These plain units are supplied with no micrometers, no micrometer brackets and no springs.

**For further fixing and mounting hole**

**dimensions please see part number L3100.FH.**

### Important Notes

Stroke is centred on the mid-point of the slides (ie 50% of total stroke each way).

**3D CAD available.**

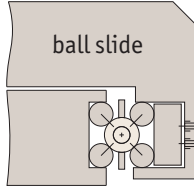
Order No.	Type	Travel	$h_1$	$l_1$	$w_1$	Through hole $d_1$	Load X & XY kg max.	X moment load Nm max.	Y moment load Nm max.	Z moment load Nm max.	Weight kg
L3104.0101-B	XY Ball	13	19.0	31.8	31.8	-	1.8	-	-	-	1.8
L3104.0201-B	XY Ball	13	19.0	44.5	44.5	-	1.8	-	-	-	1.8
L3104.0301-B	XY Ball	13	31.8	38.1	38.1	8	5.4	0.50	0.68	0.71	5.4
L3104.0451-B	XY Ball	25	38.1	44.5	44.5	-	9.1	0.96	1.13	1.19	9.1
L3104.0452-B	XY Ball	25	38.1	44.5	44.5	13	9.1	0.96	1.13	1.19	9.1
L3104.0751-B	XY Ball	25	50.8	66.5	66.5	-	27.2	4.94	5.75	6.04	27.2
L3104.0752-B	XY Ball	25	50.8	66.5	66.5	25	27.2	4.94	5.75	6.04	27.2
L3104.1202-B	XY Ball	50	46.2	79.2	79.2	-	13.6	2.89	1.95	2.05	13.6
L3104.1204-B	XY Ball	50	46.2	79.2	79.2	25	13.6	2.89	1.95	2.05	13.6
L3104.2205-B	XY Ball	75	46.2	104.6	104.6	-	13.6	4.80	3.04	3.21	13.6
L3104.2206-B	XY Ball	75	46.2	104.6	104.6	38	13.6	4.80	3.04	3.21	13.6
L3104.3205-B	XY Ball	100	46.2	130.2	130.2	-	13.6	4.80	3.04	3.21	13.6
L3104.3206-B	XY Ball	100	46.2	130.2	130.2	51	13.6	7.11	4.05	4.25	13.6
L3104.0101-R	XY Roller	13	19.0	31.8	31.8	-	10.4	-	-	-	10.4
L3104.0201-R	XY Roller	13	19.0	44.5	44.5	-	10.4	-	-	-	10.4
L3104.0301-R	XY Roller	13	31.8	38.1	38.1	8	18.1	1.67	2.26	2.37	18.1
L3104.0451-R	XY Roller	25	38.1	44.5	44.5	-	18.1	1.92	2.26	2.37	18.1
L3104.0452-R	XY Roller	25	38.1	44.5	44.5	13	18.1	1.92	2.26	2.37	18.1
L3104.0751-R	XY Roller	25	50.8	66.5	66.5	-	54.4	9.88	11.50	12.07	54.4
L3104.0752-R	XY Roller	25	50.8	66.5	66.5	25	54.4	9.88	11.50	12.07	54.4
L3104.1202-R	XY Roller	50	46.2	79.2	79.2	-	38.5	8.19	5.53	5.81	38.5
L3104.1204-R	XY Roller	50	46.2	79.2	79.2	25	38.5	8.19	5.53	5.81	38.5
L3104.2205-R	XY Roller	75	46.2	104.6	104.6	-	38.5	13.60	8.60	9.10	38.5
L3104.2206-R	XY Roller	75	46.2	104.6	104.6	38	38.5	13.60	8.60	9.10	38.5
L3104.3205-R	XY Roller	100	46.2	130.2	130.2	-	38.5	13.60	8.60	9.10	38.5
L3104.3206-R	XY Roller	100	46.2	130.2	130.2	51	38.5	20.15	11.47	12.05	38.5



There are two different load ratings for these stages.

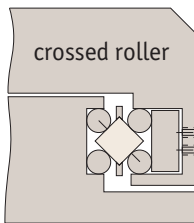
**Ball slides:**

These have precision steel balls rolling in the tracks. They are the least expensive, loads up to 28Kg.



**Cross roller slides:**

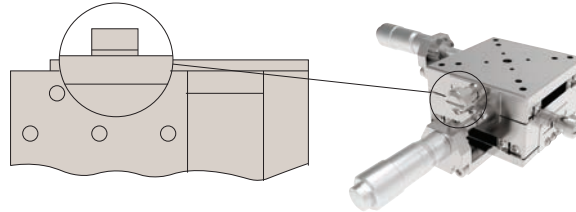
These have the same dimensions but have rollers allowing the slide to carry large loads and absorb greater moment loads up to 54Kg.



**Locking options**

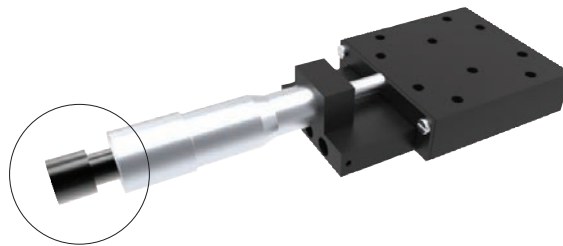
**Posi-lock:**

Allows locking of the carriage in place with a friction locking mechanism.



**Locking micrometer:**

Locking of the micrometer to fix the micrometer setting.

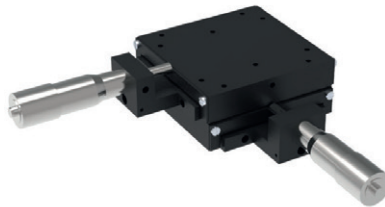


MANUAL POSITIONING STAGES

**Front drive micrometer positioning stages**



X Stage



XY Stage

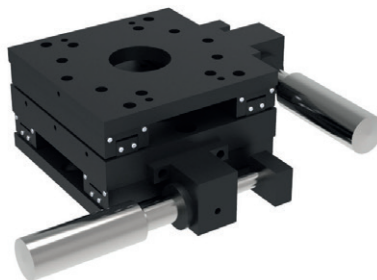


XYZ Stage

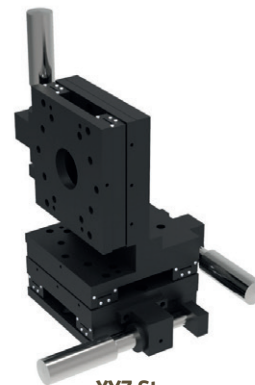
**Side drive micrometer positioning stages**



X Stage



XY Stage



XYZ Stage

Also available in stainless steel.