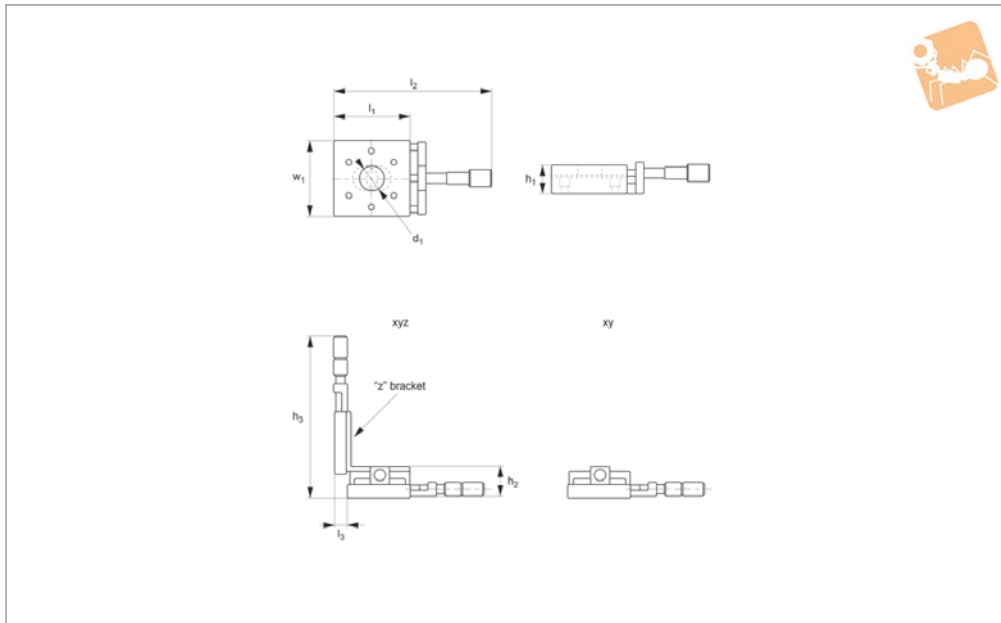




# Micrometer Positioning XY, XYZ

front drive, small sizes

# Manual Positioning Stages



## L3105

MANUAL POSITIONING STAGES

### Material

Aluminium carriage and base, black anodised steel fixing, hardened steel shafts and balls and roller elements.

### Technical Notes

Ball roller versions recommended for light loads. Cross roller versions for heavier loads and moment loads.

Straight line accuracy  $12\mu/25\text{mm}$  travel.  
 Repeatability  $3\mu$ .  
 Spring loaded micrometer allows precise repeatable adjustments with low friction and zero backlash.  
 Micrometer increments  $0,01\text{mm}$ .

### Tips

Other options:

- LM (locking micrometer).
- PL (posi-lock carriage lock).

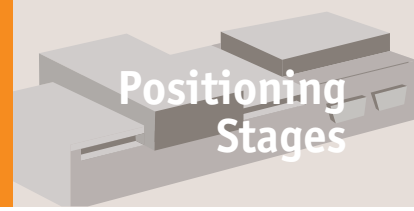
### Important Notes

Stroke is centred on the mid-point of the slides (ie 50% of total stroke each way).  
**3D CAD available.**

Order No.	Type	Travel	$h_1$	$h_2$	$h_3$	$l_1$	$l_2$	$l_3$	$w_1$	Weight kg
L3105.0101-XYB	XY Ball	13	9.7	19.0	-	31.8	82.6	-	31.8	1.8
L3105.0201-XYB	XY Ball	13	9.7	19.0	-	44.5	95.3	-	44.5	1.8
L3105.0101-XYR	XY Roller	13	9.7	19.0	-	31.8	82.6	-	31.8	10.4
L3105.0201-XYR	XY Roller	13	9.7	19.0	-	44.5	95.3	-	44.5	10.4
L3105.0101-XYZB	XYZ Ball	13	9.7	19.0	98.3	31.8	82.6	9.7	31.8	1.8
L3105.0201-XYZB	XYZ Ball	13	9.7	19.0	111.0	44.5	95.3	11.3	44.5	1.8
L3105.0101-XYZR	XYZ Roller	13	9.7	19.0	98.3	31.8	82.6	9.7	31.8	10.4
L3105.0201-XYZR	XYZ Roller	13	9.7	19.0	111.0	44.5	95.3	11.3	44.5	10.4

Order No.	Load Z kg max.	Load X & XY kg max.	X moment load Nm max.	Y moment load Nm max.	Z moment load Nm max.
L3105.0101-XYB	0.7	1.8	0.19	0.18	0.18
L3105.0201-XYB	0.7	1.8	0.28	0.27	0.27
L3105.0101-XYR	0.7	10.4	1.09	1.04	1.04
L3105.0201-XYR	0.7	10.4	1.64	1.56	1.56
L3105.0101-XYZB	0.7	1.8	0.19	0.18	0.18
L3105.0201-XYZB	0.7	1.8	0.28	0.27	0.27
L3105.0101-XYZR	0.7	10.4	1.09	1.04	1.04
L3105.0201-XYZR	0.7	10.4	1.64	1.56	1.56

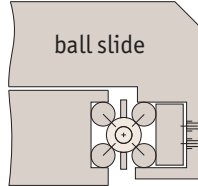




There are two different load ratings for these stages.

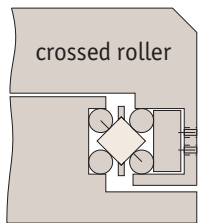
### Ball slides:

These have precision steel balls rolling in the tracks. They are the least expensive, loads up to 28Kg.



### Cross roller slides:

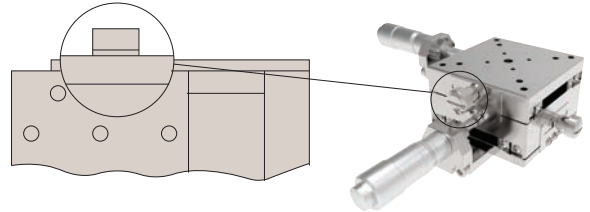
These have the same dimensions but have rollers allowing the slide to carry large loads and absorb greater moment loads up to 54Kg.



### Locking options

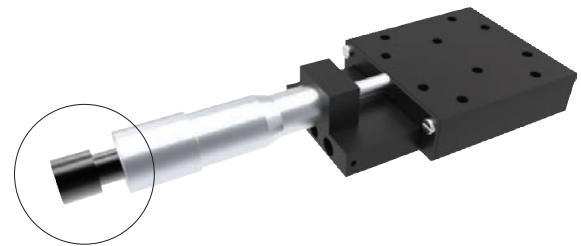
#### Posi-lock:

Allows locking of the carriage in place with a friction locking mechanism.



#### Locking micrometer:

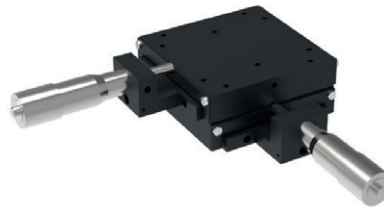
Locking of the micrometer to fix the micrometer setting.



### Front drive micrometer positioning stages



X Stage

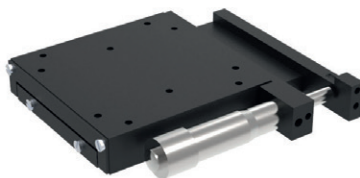


XY Stage

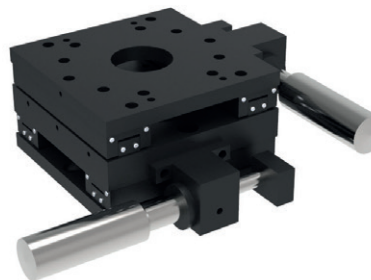


XYZ Stage

### Side drive micrometer positioning stages



X Stage



XY Stage



XYZ Stage

Also available in stainless steel.