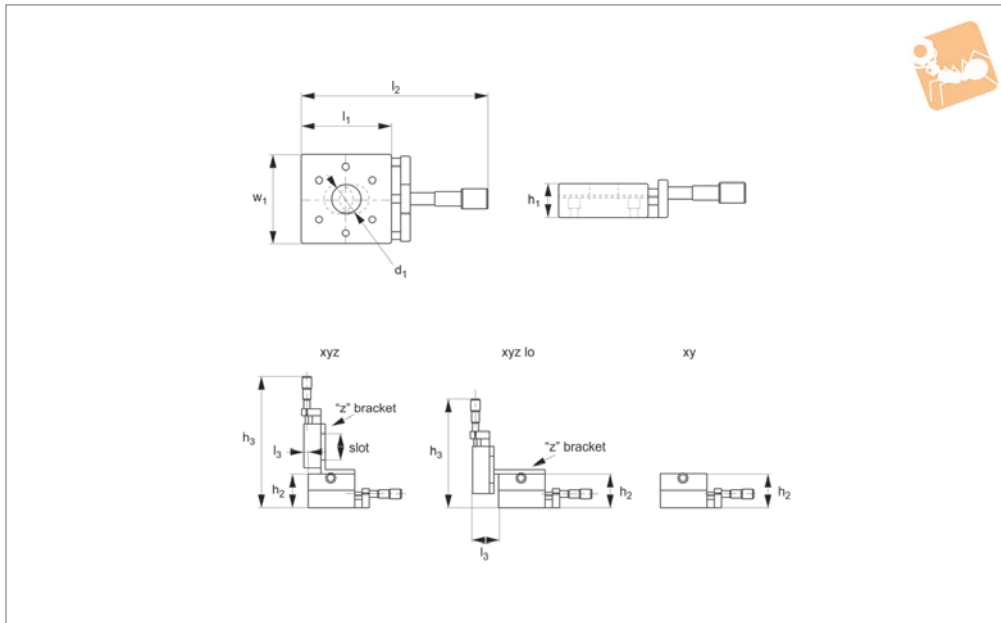
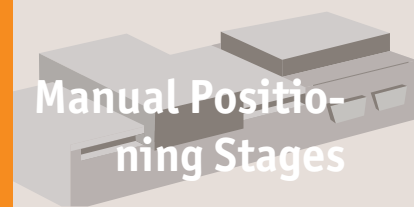




Micrometer Positioning XY, XYZ

front drive, medium sizes

Manual Positioning Stages



L3106

MANUAL POSITIONING STAGES

Material

Aluminium carriage and base, black anodised steel fixing, hardened steel shafts and balls and roller elements.

Technical Notes

Ball roller versions recommended for light loads. Cross roller versions for heavier loads and moment loads.

Straight line accuracy 12µ/25mm travel.

Repeatability 3µ.

Spring loaded micrometer allows precise repeatable adjustments with low friction and zero backlash.

Micrometer increments 0,01mm.

For further fixing and mounting hole dimensions please see part number L3100.FH.

Tips

Other options:

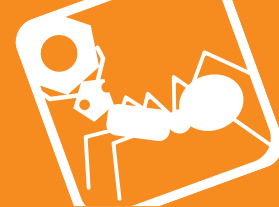
- LM (locking micrometer).
- PL (posi-lock carriage lock).

Important Notes

Stroke is centred on the mid-point of the slides (ie 50% of total stroke each way).

3D CAD available.

Order No.	Type	Travel	h ₁	h ₂	h ₃	l ₁	l ₂	l ₃	w ₁	Weight kg
L3106.0301-XYB	XY Ball	13	15.7	31.8	-	38.1	88.9	-	38.1	5.4
L3106.0450-XYB	XY Ball	13	19.1	38.1	-	44.5	111.3	-	44.5	9.1
L3106.0451-XYB	XY Ball	25	19.1	38.1	-	44.5	149.4	-	44.5	9.1
L3106.0453-XYB	XY Ball	13	19.1	38.1	-	44.5	111.3	-	44.5	9.1
L3106.0750-XYB	XY Ball	13	25.4	50.8	-	66.5	133.4	-	66.5	27.2
L3106.0751-XYB	XY Ball	25	25.4	50.8	-	66.5	171.5	-	66.5	27.2
L3106.0753-XYB	XY Ball	13	25.4	50.8	-	66.5	133.4	-	66.5	27.2
L3106.0301-XYR	XY Roller	13	15.7	31.8	-	38.1	88.9	-	38.1	18.1
L3106.0450-XYR	XY Roller	13	19.1	38.1	-	44.5	111.3	-	44.5	18.1
L3106.0451-XYR	XY Roller	25	19.1	38.1	-	44.5	149.4	-	44.5	18.1
L3106.0453-XYR	XY Roller	13	19.1	38.1	-	44.5	111.3	-	44.5	18.1
L3106.0750-XYR	XY Roller	13	25.4	50.8	-	66.5	133.4	-	66.5	54.4
L3106.0751-XYR	XY Roller	25	25.4	50.8	-	66.5	171.5	-	66.5	54.4
L3106.0753-XYR	XY Roller	13	25.4	50.8	-	66.5	133.4	-	66.5	54.4
L3106.0301-XYZB	XYZ Ball	13	15.7	31.8	130	38.1	88.9	8.1	38.1	5.4
L3106.0450-XYZB	XYZ Ball	13	19.1	38.1	162.1	44.5	111.3	0	44.5	9.1
L3106.0451-XYZB	XYZ Ball	25	19.1	38.1	200.2	44.5	149.4	0	44.5	9.1
L3106.0453-XYZB	XYZ Ball	13	19.1	38.1	162.1	44.5	111.3	0	44.5	9.1
L3106.0750-XYZB	XYZ Ball	13	25.4	50.8	199.9	66.5	133.4	1.5	66.5	27.2
L3106.0751-XYZB	XYZ Ball	25	25.4	50.8	238	66.5	171.5	1.5	66.5	27.2
L3106.0753-XYZB	XYZ Ball	13	25.4	50.8	199.9	66.5	133.4	1.5	66.5	27.2
L3106.0301-XYZR	XYZ Roller	13	15.7	31.8	130	38.1	88.9	8.1	38.1	18.1
L3106.0450-XYZR	XYZ Roller	13	19.1	38.1	162.1	44.5	111.3	0	44.5	18.1
L3106.0451-XYZR	XYZ Roller	25	19.1	38.1	200.2	44.5	149.4	0	44.5	18.1
L3106.0453-XYZR	XYZ Roller	13	19.1	38.1	162.1	44.5	111.3	0	44.5	18.1
L3106.0750-XYZR	XYZ Roller	13	25.4	50.8	199.9	66.5	133.4	1.5	66.5	54.4
L3106.0751-XYZR	XYZ Roller	25	25.4	50.8	238	66.5	171.5	1.5	66.5	54.4
L3106.0753-XYZR	XYZ Roller	13	25.4	50.8	199.9	66.5	133.4	1.5	66.5	54.4



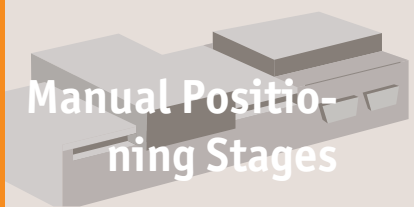
Order No.	Type	Travel	h ₁	h ₂	h ₃	l ₁	l ₂	l ₃	w ₁	Weight kg
L3106.0301-XYZLB	XYZ Ball Lo	13	15.7	31.8	100.1	38.1	88.9	25.4	38.1	5.4
L3106.0450-XYZLB	XYZ Ball Lo	13	19.1	38.1	128.8	44.5	111.3	28.4	44.5	9.1
L3106.0451-XYZLB	XYZ Ball Lo	25	19.1	38.1	166.9	44.5	149.4	28.4	44.5	9.1
L3106.0453-XYZLB	XYZ Ball Lo	13	19.1	38.1	128.8	44.5	111.3	28.4	44.5	9.1
L3106.0750-XYZLB	XYZ Ball Lo	13	25.4	50.8	150.9	66.5	133.4	38.1	66.5	27.2
L3106.0751-XYZLB	XYZ Ball Lo	25	25.4	50.8	189	66.5	171.5	38.1	66.5	27.2
L3106.0753-XYZLB	XYZ Ball Lo	13	25.4	50.8	150.9	66.5	133.4	38.1	66.5	27.2
L3106.0301-XYZLR	XYZ Roller Lo	13	15.7	31.8	106.4	38.1	88.9	25.4	38.1	18.1
L3106.0450-XYZLR	XYZ Roller Lo	13	19.1	38.1	128.8	44.5	111.3	28.4	44.5	18.1
L3106.0451-XYZLR	XYZ Roller Lo	25	19.1	38.1	166.9	44.5	149.4	28.4	44.5	18.1
L3106.0453-XYZLR	XYZ Roller Lo	13	19.1	38.1	128.8	44.5	111.3	28.4	44.5	18.1
L3106.0750-XYZLR	XYZ Roller Lo	13	25.4	50.8	150.9	66.5	133.4	38.1	66.5	54.4
L3106.0751-XYZLR	XYZ Roller Lo	25	25.4	50.8	189	66.5	171.5	38.1	66.5	54.4
L3106.0753-XYZLR	XYZ Roller Lo	13	25.4	50.8	150.9	66.5	133.4	38.1	66.5	54.4

Order No.	Through hole d ₁	Load Z kg max.	Load X & Y kg max.	X moment load Nm max.	Y moment load Nm max.	Z moment load Nm max.	Slot size
L3106.0301-XYB	8	0.9	5.4	0.50	0.50	0.50	-
L3106.0450-XYB	-	0.9	9.1	0.96	0.96	0.96	-
L3106.0451-XYB	-	0.9	9.1	0.96	0.96	0.96	-
L3106.0453-XYB	13	0.9	9.1	0.96	0.96	0.96	-
L3106.0750-XYB	-	0.9	27.2	4.94	4.94	4.94	-
L3106.0751-XYB	-	0.9	27.2	4.94	4.94	4.94	-
L3106.0753-XYB	25	0.9	27.2	4.94	4.94	4.94	-
L3106.0301-XYR	8	0.9	18.1	2.88	2.88	2.88	-
L3106.0450-XYR	-	0.9	18.1	1.92	1.92	1.92	-
L3106.0451-XYR	-	0.9	18.1	1.92	1.92	1.92	-
L3106.0453-XYR	13	0.9	18.1	1.92	1.92	1.92	-
L3106.0750-XYR	-	0.9	54.4	9.88	9.88	9.88	-
L3106.0751-XYR	-	0.9	54.4	9.88	9.88	9.88	-
L3106.0753-XYR	25	0.9	54.4	9.88	9.88	9.88	-
L3106.0301-XYZB	8	0.9	5.4	0.50	0.50	0.50	10x22
L3106.0450-XYZB	-	0.9	9.1	0.96	0.96	0.96	13x25
L3106.0451-XYZB	-	0.9	9.1	0.96	0.96	0.96	13x25
L3106.0453-XYZB	13	0.9	9.1	0.96	0.96	0.96	13x25
L3106.0750-XYZB	-	0.9	27.2	4.94	4.94	4.94	25x38
L3106.0751-XYZB	-	0.9	27.2	4.94	4.94	4.94	25x38
L3106.0753-XYZB	25	0.9	27.2	4.94	4.94	4.94	25x38
L3106.0301-XYZR	8	0.9	18.1	2.88	2.88	2.88	10x22
L3106.0450-XYZR	-	0.9	18.1	1.92	1.92	1.92	13x25
L3106.0451-XYZR	-	0.9	18.1	1.92	1.92	1.92	13x25
L3106.0453-XYZR	13	0.9	18.1	1.92	1.92	1.92	13x25
L3106.0750-XYZR	-	0.9	54.4	9.88	9.88	9.88	25x38
L3106.0751-XYZR	-	0.9	54.4	9.88	9.88	9.88	25x38
L3106.0753-XYZR	25	0.9	54.4	9.88	9.88	9.88	25x38
L3106.0301-XYZLB	8	0.9	5.4	0.50	0.50	0.50	10x22
L3106.0450-XYZLB	-	0.9	9.1	0.96	0.96	0.96	13x25
L3106.0451-XYZLB	-	0.9	9.1	0.96	0.96	0.96	13x25
L3106.0453-XYZLB	13	0.9	9.1	0.96	0.96	0.96	13x25
L3106.0750-XYZLB	-	0.9	27.2	4.94	4.94	4.94	25x38
L3106.0751-XYZLB	-	0.9	27.2	4.94	4.94	4.94	25x38
L3106.0753-XYZLB	25	0.9	27.2	4.94	4.94	4.94	25x38
L3106.0301-XYZLR	8	0.9	18.1	2.88	2.88	2.88	10x22
L3106.0450-XYZLR	-	0.9	18.1	1.92	1.92	1.92	13x25
L3106.0451-XYZLR	-	0.9	18.1	1.92	1.92	1.92	13x25
L3106.0453-XYZLR	13	0.9	18.1	1.92	1.92	1.92	13x25
L3106.0750-XYZLR	-	0.9	54.4	9.88	9.88	9.88	25x38
L3106.0751-XYZLR	-	0.9	54.4	9.88	9.88	9.88	25x38
L3106.0753-XYZLR	25	0.9	54.4	9.88	9.88	9.88	25x38



Micrometer Positioning XY, XYZ

front drive, medium sizes

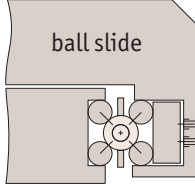




There are two different load ratings for these stages.

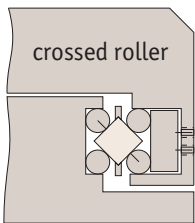
Ball slides:

These have precision steel balls rolling in the tracks. They are the least expensive, loads up to 28Kg.



Cross roller slides:

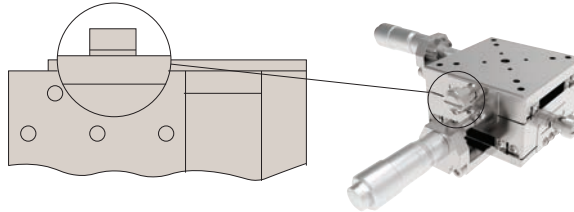
These have the same dimensions but have rollers allowing the slide to carry large loads and absorb greater moment loads up to 54Kg.



Locking options

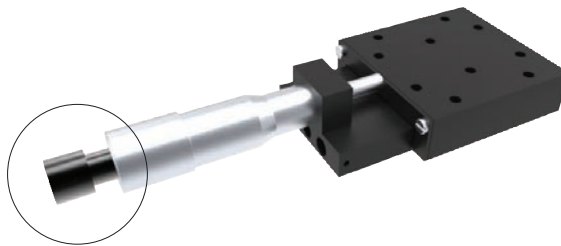
Posi-lock:

Allows locking of the carriage in place with a friction locking mechanism.



Locking micrometer:

Locking of the micrometer to fix the micrometer setting.



MANUAL POSITIONING STAGES

Front drive micrometer positioning stages



X Stage



XY Stage

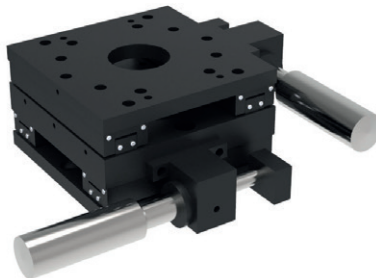


XYZ Stage

Side drive micrometer positioning stages



X Stage



XY Stage



XYZ Stage

Also available in stainless steel.