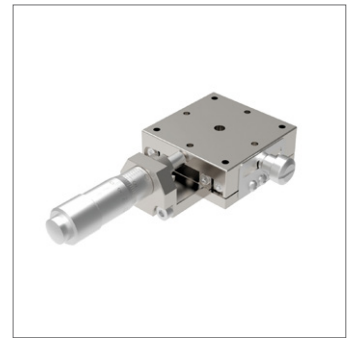
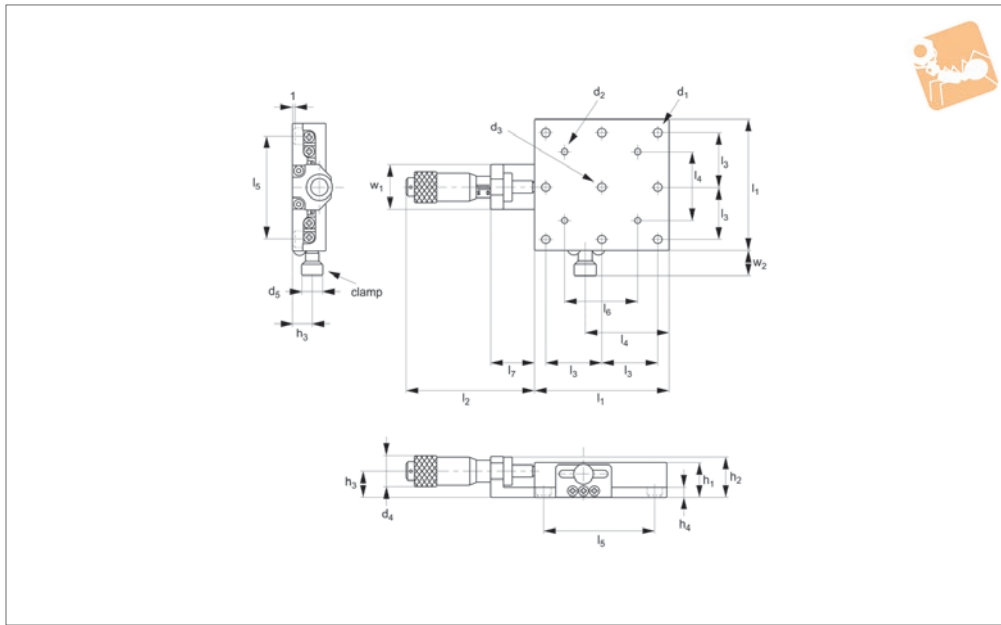
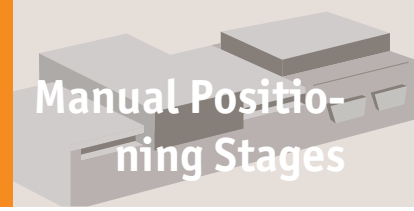




Stainless Micrometer X Stages

front drive

Manual Positioning Stages



L3120

MANUAL POSITIONING STAGES

Material

Stainless steel (440C) with electroless nickel plating.

Technical Notes

Straightness accuracy 5µ.

Spring loaded micrometer allows precise repeatable adjustments with low friction and zero backlash.
Micrometer increments 0,01mm.

Important Notes

Stroke is centred on the mid-point of the slides (ie 50% of total stroke each way).
3D CAD available.

Order No.	Travel	l ₁	l ₂	l ₃	l ₄	l ₅	l ₆	l ₇	h ₁	h ₂	h ₃
L3120.040	13	40	58.5	16	26	32	-	20.5	16.0	19.0	10.5
L3120.060	13	60	58.5	25	36	50	32	20.5	16.0	19.0	10.5
L3120.080	25	80	80.0	35	55	70	50	24.5	20.0	24.3	16.8
L3120.100	25	100	80.0	45	67.5	90	70	24.5	20.0	24.3	16.8

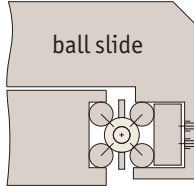
Order No.	h ₄	d ₁	d ₂	d ₃	d ₄	d ₅	w ₁	w ₂	Load kg max.
L3120.040	4.5	M3	-	4	13	10	20	11.5	10.0
L3120.060	5.0	M4	M3	4	13	10	20	11.5	20.0
L3120.080	6.5	M4	M4	4	13	10	24	11.2	27.0
L3120.100	6.5	M4	M4	4	13	10	24	11.2	35.0



There are two different load ratings for these stages.

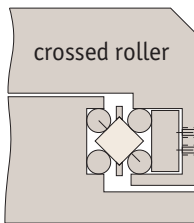
Ball slides:

These have precision steel balls rolling in the tracks. They are the least expensive, loads up to 28Kg.



Cross roller slides:

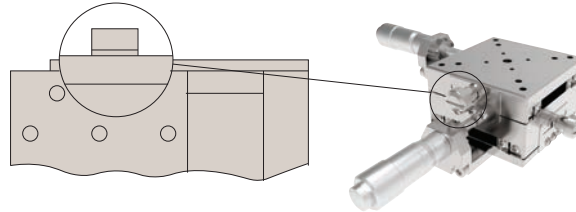
These have the same dimensions but have rollers allowing the slide to carry large loads and absorb greater moment loads up to 54Kg.



Locking options

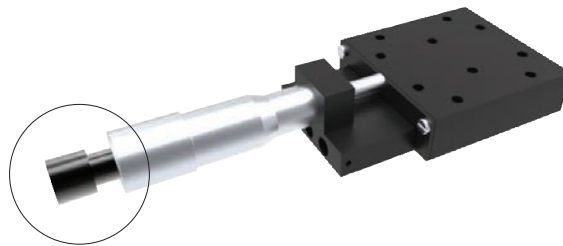
Posi-lock:

Allows locking of the carriage in place with a friction locking mechanism.



Locking micrometer:

Locking of the micrometer to fix the micrometer setting.

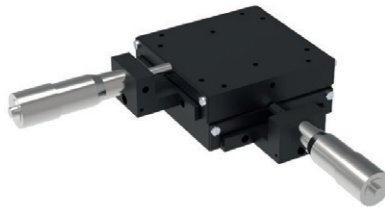


MANUAL POSITIONING STAGES

Front drive micrometer positioning stages



X Stage



XY Stage

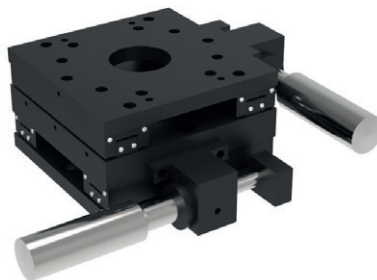


XYZ Stage

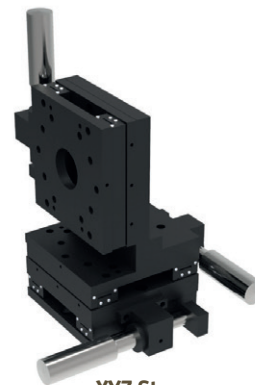
Side drive micrometer positioning stages



X Stage



XY Stage



XYZ Stage

Also available in stainless steel.