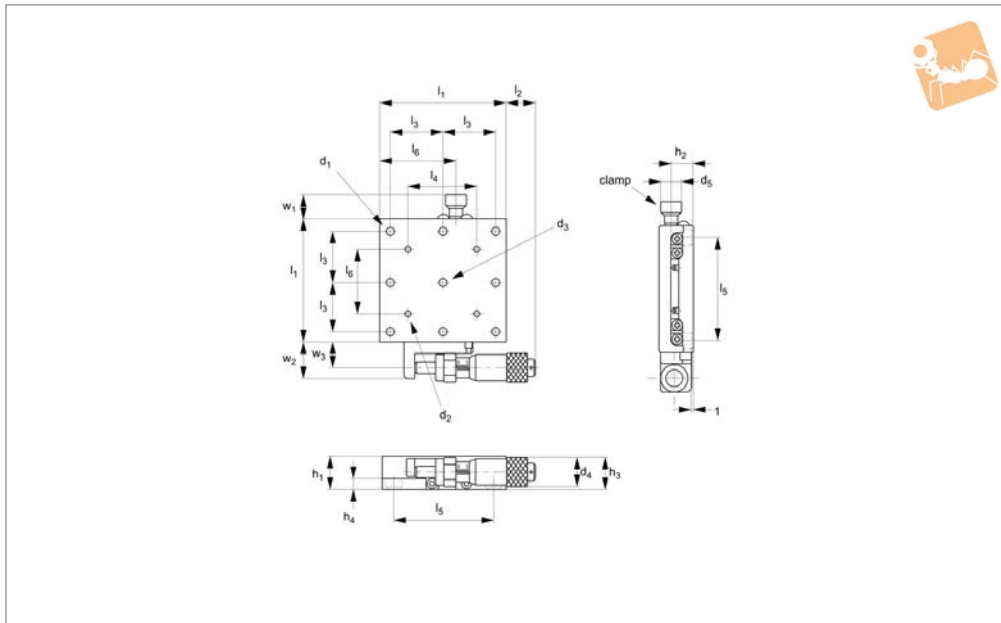
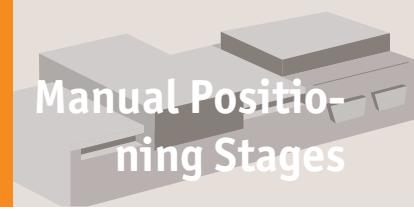




# Stainless Micrometer X Stages

side drive

# Manual Positioning Stages



**L3122**

MANUAL POSITIONING STAGES

**Material**

Stainless steel (440C) with electroless nickel plating.

Spring loaded micrometer allows precise repeatable adjustments with low friction and zero backlash.  
Micrometer increments 0,01mm.

**Important Notes**

Stroke is centred on the mid-point of the slides (ie 50% of total stroke each way).  
**3D CAD available.**

**Technical Notes**

Straightness accuracy 5µ.

Order No.	Travel	$l_1$	$l_2$	$l_3$	$l_4$	$l_5$	$l_6$	$h_1$	$h_2$	$h_3$	$h_4$
L3122.040	13	40	23.7	16	-	32	26	16.0	10.5	9	4.5
L3122.060	13	60	13.8	25	32	50	36	16.0	10.5	9	5.0
L3122.080	25	80	32.5	25	50	70	55	20.0	14.5	10.8	6.5
L3122.100	25	100	17.5	25	70	90	67.5	20.0	14.5	10.8	6.5

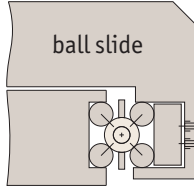
Order No.	$d_1$	$d_2$	$d_3$	$d_4$	$d_5$	$w_1$	$w_2$	Load kg max.
L3122.040	M3	-	4	13	10	18.5	12	10.0
L3122.060	M4	M3	4	13	10	18.5	12	20.0
L3122.080	M4	M4	4	13	10	23.5	17	27.0
L3122.100	M4	M4	4	13	10	23.5	17	35.0



There are two different load ratings for these stages.

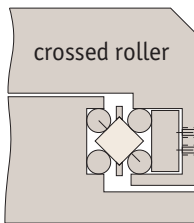
### Ball slides:

These have precision steel balls rolling in the tracks. They are the least expensive, loads up to 28Kg.



### Cross roller slides:

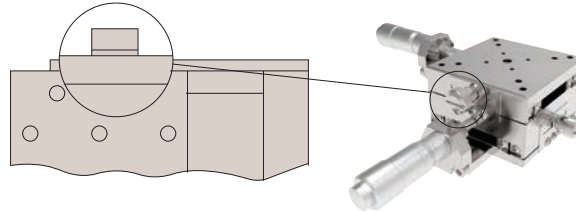
These have the same dimensions but have rollers allowing the slide to carry large loads and absorb greater moment loads up to 54Kg.



### Locking options

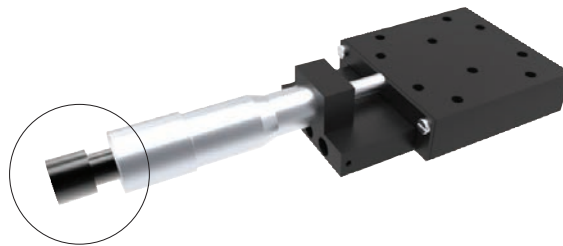
#### Posi-lock:

Allows locking of the carriage in place with a friction locking mechanism.



#### Locking micrometer:

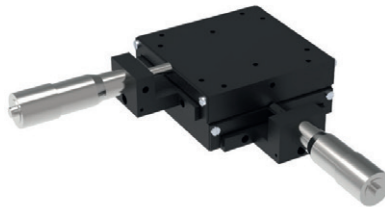
Locking of the micrometer to fix the micrometer setting.



### Front drive micrometer positioning stages



X Stage



XY Stage

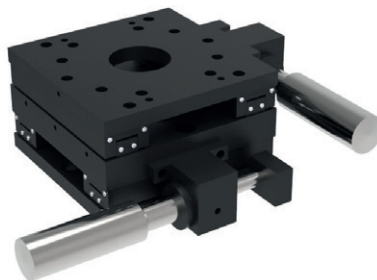


XYZ Stage

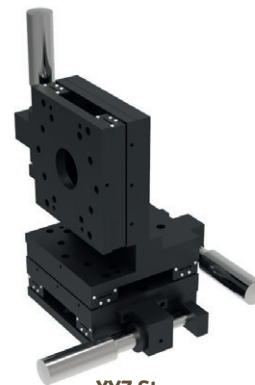
### Side drive micrometer positioning stages



X Stage



XY Stage



XYZ Stage

Also available in stainless steel.