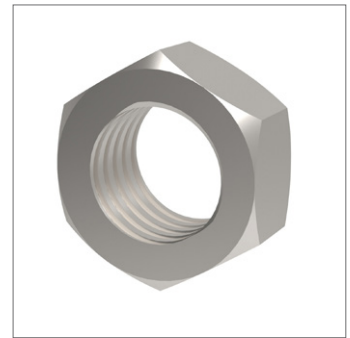
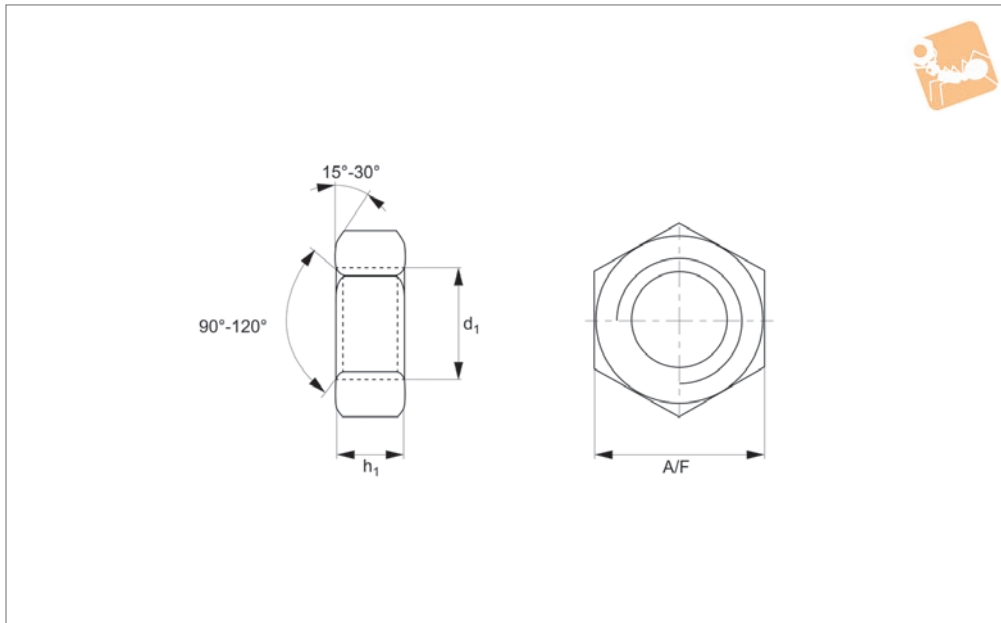




# Full Nuts Coarse Thread

## A2 stainless



### P0301.A2

NUTS

#### Material

Stainless steel (A2).

threads.

For fine thread full nuts see P0302.

#### Technical Notes

To DIN 934. Standard metric coarse pitch

Order No.	d <sub>1</sub>	h <sub>1</sub> min.	A/F	Material
P0301.014-A2	M1,4	0.95	3	A2 s/s
P0301.016-A2	M1,6	1.05	3.2	A2 s/s
P0301.020-A2	M 2	1.35	4	A2 s/s
P0301.025-A2	M2,5	1.75	5	A2 s/s
P0301.030-A2	M 3	2.15	5.5	A2 s/s
P0301.035-A2	M3,5	2.55	6	A2 s/s
P0301.040-A2	M 4	2.9	7	A2 s/s
P0301.050-A2	M 5	3.7	8	A2 s/s
P0301.060-A2	M 6	4.7	10	A2 s/s
P0301.070-A2	M 7	5.2	11	A2 s/s
P0301.080-A2	M 8	6.14	13	A2 s/s
P0301.100-A2	M10	7.64	17	A2 s/s
P0301.120-A2	M12	9.64	19	A2 s/s
P0301.140-A2	M14	10.3	22	A2 s/s
P0301.160-A2	M16	12.3	24	A2 s/s
P0301.180-A2	M18	14.3	27	A2 s/s
P0301.200-A2	M20	14.9	30	A2 s/s
P0301.220-A2	M22	16.9	32	A2 s/s
P0301.240-A2	M24	17.7	36	A2 s/s
P0301.270-A2	M27	20.7	41	A2 s/s
P0301.300-A2	M30	22.7	46	A2 s/s
P0301.330-A2	M33	24.7	50	A2 s/s
P0301.360-A2	M36	27.4	55	A2 s/s
P0301.420-A2	M42	32.4	65	A2 s/s
P0301.480-A2	M48	36.4	75	A2 s/s