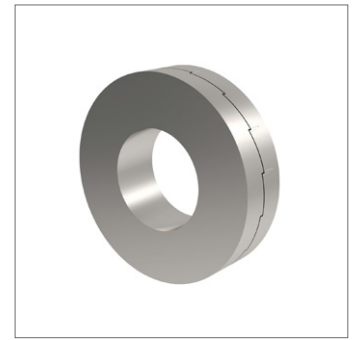
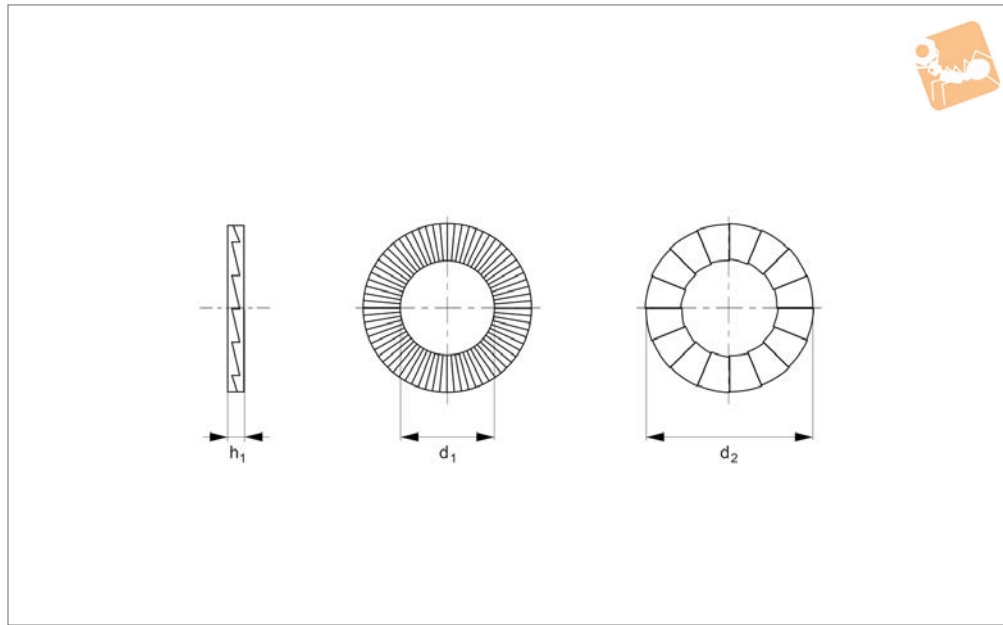




# Locking Washers (Nord-Lock) A4 stainless



## Flat Washers



**P0367.A4**

FLAT WASHERS

### Material

Stainless steel (A4, AISI 316).

dynamic loads. Washers are installed in pairs, wedge face to wedge face.

### Technical Notes

Locking washer for vibration proofing and

Order No.	For thread	d <sub>1</sub>	d <sub>2</sub>	h <sub>1</sub>	Material
P0367.030-A4	M 3	3.4	7.0	1.8	A4 s/s
P0367.040-A4	M 4	4.4	7.6	1.8	A4 s/s
P0367.050-A4	M 5	5.4	9.0	1.8	A4 s/s
P0367.060-A4	M 6	6.5	10.8	1.8	A4 s/s
P0367.080-A4	M 8	8.7	13.5	2.5	A4 s/s
P0367.100-A4	M10	10.7	16.6	2.5	A4 s/s
P0367.120-A4	M12	13	19.5	2.5	A4 s/s
P0367.140-A4	M14	15.2	23.0	3.4	A4 s/s
P0367.160-A4	M16	17	25.4	3.4	A4 s/s
P0367.180-A4	M18	19.5	29.0	3.4	A4 s/s
P0367.200-A4	M20	21.4	30.7	3.4	A4 s/s
P0367.220-A4	M22	23.4	34.5	3.4	A4 s/s
P0367.240-A4	M24	25.3	39.0	3.4	A4 s/s
P0367.270-A4	M27	28.4	42.0	6.6	A4 s/s
P0367.300-A4	M30	31.4	47.0	6.6	A4 s/s
P0367.330-A4	M33	34.4	48.5	6.3	A4 s/s
P0367.360-A4	M36	37.4	55.0	6.6	A4 s/s
P0367.420-A4	M42	43.2	63.0	6.6	A4 s/s