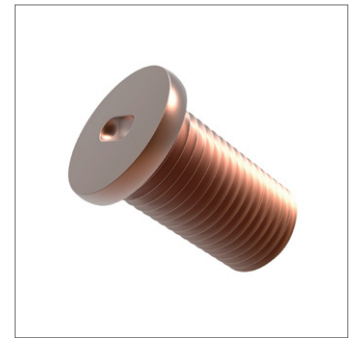
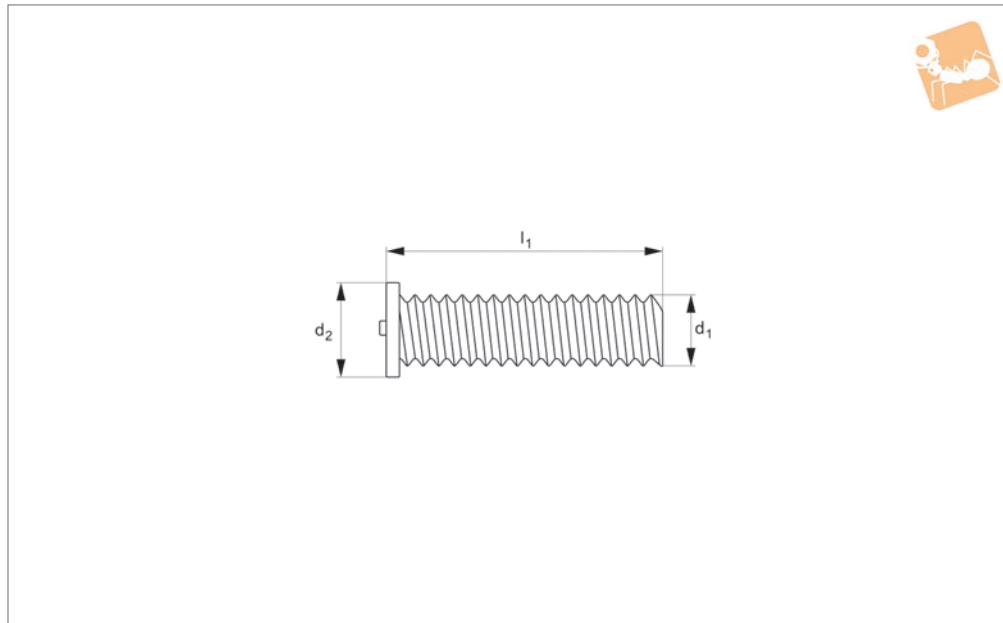
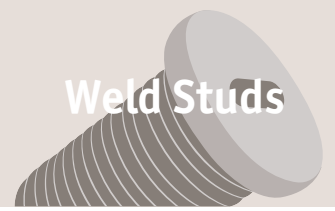




# CD Weldstud

Copper coated

## Weld Studs



**P0830.CU**

WELD STUDS

### Material

Steel, copper coated.

### Technical Notes

CD weld studs have a small nub under their

end which melts to form the weld. When the nub disintegrates it melts and helps solidify the weld to the base material. CD stud welding is often used for smaller

diameter studs and pins, as well as on non-standard materials and for accuracy.

Order No.	d <sub>1</sub>	d <sub>2</sub>	l <sub>1</sub>
P0830.030-006-CU	M3	4.5	6
P0830.030-008-CU	M3	4.5	8
P0830.030-010-CU	M3	4.5	10
P0830.030-012-CU	M3	4.5	12
P0830.030-015-CU	M3	4.5	15
P0830.030-016-CU	M3	4.5	16
P0830.030-020-CU	M3	4.5	20
P0830.030-025-CU	M3	4.5	25
P0830.030-030-CU	M3	4.5	30
P0830.030-035-CU	M3	4.5	35
P0830.030-040-CU	M3	4.5	40
P0830.030-050-CU	M3	4.5	50
P0830.040-006-CU	M4	5.5	6
P0830.040-008-CU	M4	5.5	8
P0830.040-010-CU	M4	5.5	10
P0830.040-012-CU	M4	5.5	12
P0830.040-015-CU	M4	5.5	15
P0830.040-016-CU	M4	5.5	16
P0830.040-020-CU	M4	5.5	20
P0830.040-025-CU	M4	5.5	25
P0830.040-030-CU	M4	5.5	30
P0830.040-035-CU	M4	5.5	35
P0830.040-040-CU	M4	5.5	40
P0830.040-045-CU	M4	5.5	45
P0830.040-050-CU	M4	5.5	50
P0830.050-006-CU	M5	6.5	6
P0830.050-008-CU	M5	6.5	8
P0830.050-010-CU	M5	6.5	10
P0830.050-012-CU	M5	6.5	12
P0830.050-015-CU	M5	6.5	15
P0830.050-016-CU	M5	6.5	16
P0830.050-020-CU	M5	6.5	20
P0830.050-025-CU	M5	6.5	25
P0830.050-030-CU	M5	6.5	30



WELD STUDS

Order No.	d <sub>1</sub>	d <sub>2</sub>	l <sub>1</sub>
P0830.050-035-CU	M5	6.5	35
P0830.050-040-CU	M5	6.5	40
P0830.050-045-CU	M5	6.5	45
P0830.050-050-CU	M5	6.5	50
P0830.050-060-CU	M5	6.5	60
P0830.060-008-CU	M6	7.5	8
P0830.060-010-CU	M6	7.5	10
P0830.060-012-CU	M6	7.5	12
P0830.060-014-CU	M6	7.5	14
P0830.060-015-CU	M6	7.5	15
P0830.060-016-CU	M6	7.5	16
P0830.060-020-CU	M6	7.5	20
P0830.060-025-CU	M6	7.5	25
P0830.060-030-CU	M6	7.5	30
P0830.060-035-CU	M6	7.5	35
P0830.060-040-CU	M6	7.5	40
P0830.060-045-CU	M6	7.5	45
P0830.060-050-CU	M6	7.5	50
P0830.060-055-CU	M6	7.5	55
P0830.060-060-CU	M6	7.5	60
P0830.080-010-CU	M8	9.0	10
P0830.080-012-CU	M8	9.0	12
P0830.080-014-CU	M8	9.0	14
P0830.080-015-CU	M8	9.0	15
P0830.080-016-CU	M8	9.0	16
P0830.080-020-CU	M8	9.0	20
P0830.080-025-CU	M8	9.0	25
P0830.080-030-CU	M8	9.0	30
P0830.080-035-CU	M8	9.0	35
P0830.080-040-CU	M8	9.0	40
P0830.080-045-CU	M8	9.0	45
P0830.080-050-CU	M8	9.0	50
P0830.080-055-CU	M8	9.0	55
P0830.080-060-CU	M8	9.0	60