

## R3460

BALL & SOCKET JOINTS

### Material

Steel, silver zinc plated, ball stud: minimum tensile strength  $R_m=600N/mm^2$ .  
Housing: minimum tensile strength  $R_m=500N/mm^2$ .

### Technical Notes

To DIN 71802 form CS, supplied with hexagon nut.

Safety ring aids the retention of the ball stud in the housing.

\*M14x1,5 is a fine pitch thread.

Male Stud part is to DIN 71803 with diameter 14, Tolerance is 11 and length is between 5.0 - 10.8

### Tips

For sealing cap version, see R3470.

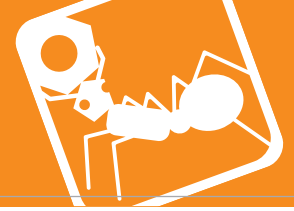
Standard thread is right hand, (for left hand thread see R3461).

### Important Notes

Thread is not full length. There is a min 1.5mm unthreaded shank. If using part without the supplied nut, then please consider a counterbore to accommodate the unthreaded shank.

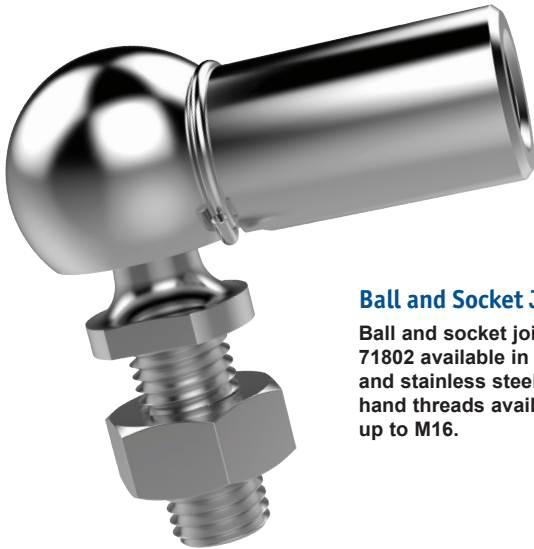
Order No.	Thread hand	$d_1$	$l_1$ $\pm 0.3$	$d_2$	$d_3$	$d_4$	$h_1$ $\pm 0.3$	Weight g
R3460.R005	Right	8	22	M 5	8	12.8	10.2	15.2
R3460.R006	Right	10	25	M 6	10	14.8	12.5	25.2
R3460.R008	Right	13	30	M 8	13	19.3	16.5	53.1
R3460.R010	Right	16	35	M10	16	24.0	20.0	103.8
R3460.R012	Right	16	35	M12	16	24.0	20.0	103.8
R3460.R014	Right	19	45	M14x1,5*	22	30.0	28.0	220.9
R3460.R015	Right	19	45	M14	22	30.0	28.0	220.9
R3460.R016	Right	19	45	M16	22	30.0	28.0	220.9

Order No.	$h_2$ $\pm 0.3$	$l_2$ min.	A/F tol. $h_{14}$	Extraction force kg min.	Static load kg max.	Dyn. load C kg max.	Force required for movement kg max.
R3460.R005	9	10.2	7	3	50	20	3
R3460.R006	11	11.5	8	4	100	40	4
R3460.R008	13	14.0	11	6	200	80	6
R3460.R010	16	15.5	13	8	400	160	8
R3460.R012	16	15.5	13	8	400	160	8
R3460.R014	22	21.5	16	10	800	320	10
R3460.R015	22	21.5	16	10	800	320	10
R3460.R016	22	21.5	16	10	800	320	10



Parts overview

BALL & SOCKET JOINTS



**Ball and Socket Joints**

Ball and socket joints to DIN 71802 available in zinc plated steel and stainless steel. Right and left hand threads available. Sizes M5 up to M16.



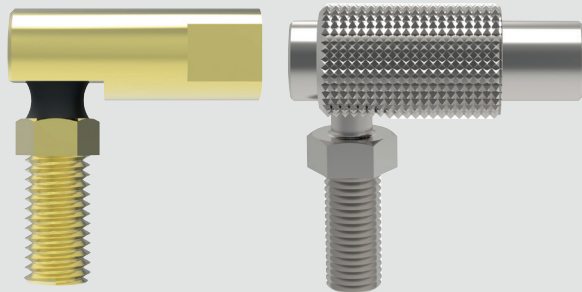
**Axial Ball and Socket Joints**

In-line ball and socket joints to DIN 71802 available in zinc plated steel and stainless steel. Sizes M5 up to M14 x 1,5.



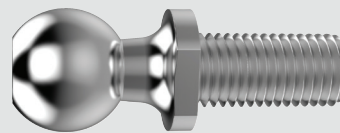
**Ball and Socket Joints with sealing caps and spanner flats**

Ball and socket joints to DIN 71802 available in zinc plated steel and stainless steel. Right and left hand threads available. Spanner flats on housing to aid installation. Sizes M5 up to M16.



**Quick Release plus other ball and socket joints**

Quick release ball joints allow rapid release and reconnection of ball stud for easy installation. DMG6 and male: male ball joints and lockable also available. Sizes M5 up to M10.



**Threaded Ball Studs**

Threaded ball studs to DIN71803 form C available in zinc plated steel. Sizes M5 up to M14.

see our website for our full range:  
[wixroyd.com](http://wixroyd.com)