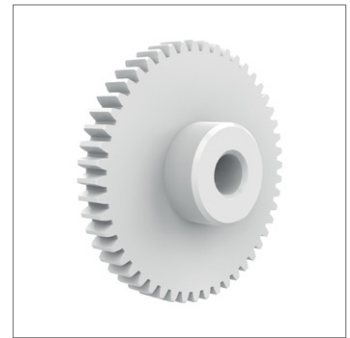
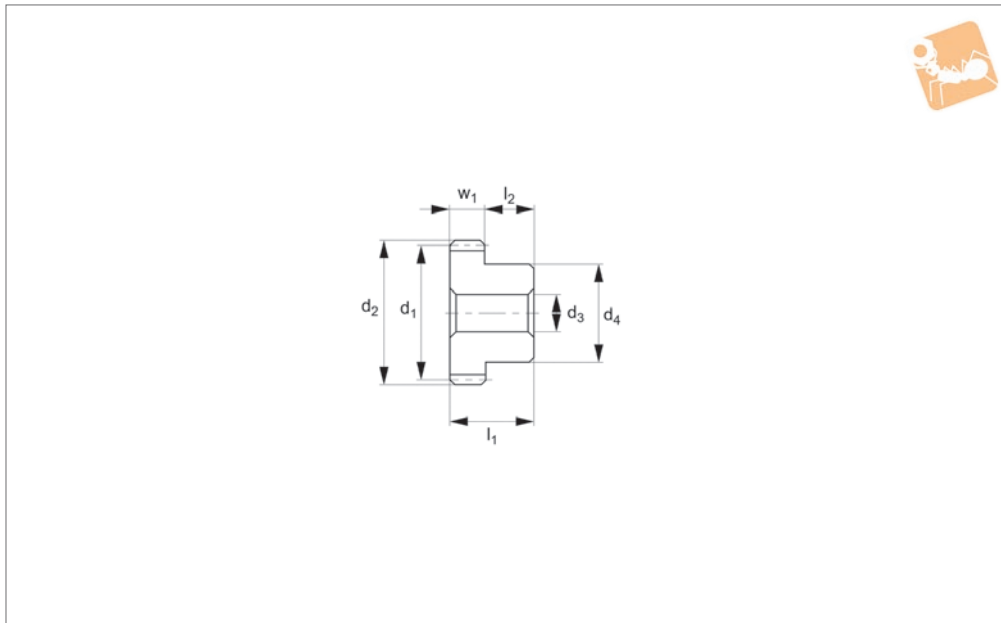




Spur Gears - Module 1 - Plastic

white polyacetal - 17-120 teeth



R5166

STANDARD SPUR GEARS

Material

White polyacetal (PA, also known as polyoxymethylene/POM), machined. Accuracy to JIS B 1702-1 (ISO) class 9-10.

Technical Notes

20° pressure angle, full depth tooth.

Amount of backlash when assembling gears = 0,06 - 0,12mm.

Tips

For module 1 white polyacetal gears with set screws see R5169 & R5170. Max. allowable torque (Nm) is based on standard

operating conditions (see technical pages) with a safety factor of 1.2. For non standard applications apply a suitable safety factor depending on frequency of use, type of working etc.

Order No.	Module	No. of teeth z	Pitch dia. d ₁	d ₂	w ₁	d ₃ tol. H9	d ₄	l ₁	l ₂	Torque Nm max.	Weight g
R5166.100-017	m 1	17	17	19	8	6	14	16	8	0.80	3.7
R5166.100-018	m 1	18	18	20	8	8	15	16	8	0.84	3.7
R5166.100-020	m 1	20	20	22	8	8	16	16	8	0.94	4.7
R5166.100-022	m 1	22	22	24	8	8	18	16	8	1.03	6.0
R5166.100-023	m 1	23	23	25	8	8	18	16	8	1.08	6.4
R5166.100-024	m 1	24	24	26	8	8	18	16	8	1.12	6.8
R5166.100-025	m 1	25	25	27	8	8	18	16	8	1.17	7.3
R5166.100-026	m 1	26	26	28	8	8	20	16	8	1.22	8.4
R5166.100-028	m 1	28	28	30	8	8	20	16	8	1.31	9.4
R5166.100-030	m 1	30	30	32	8	8	20	16	8	1.40	10.4
R5166.100-032	m 1	32	32	34	6	8	20	14	8	2.00	9.4
R5166.100-034	m 1	34	34	36	6	8	20	14	8	2.13	10.2
R5166.100-035	m 1	35	35	37	6	8	20	14	8	2.19	10.7
R5166.100-036	m 1	36	36	38	6	8	20	14	8	2.25	11.2
R5166.100-038	m 1	38	38	40	6	8	20	14	8	2.38	12.2
R5166.100-040	m 1	40	40	42	6	8	20	14	8	2.50	13.2
R5166.100-042	m 1	42	42	44	6	8	20	14	8	2.63	14.3
R5166.100-044	m 1	44	44	46	6	8	20	14	8	2.75	15.4
R5166.100-045	m 1	45	45	47	6	8	20	14	8	2.91	16.0
R5166.100-048	m 1	48	48	50	6	8	20	14	8	3.00	17.9
R5166.100-050	m 1	50	50	52	6	8	20	14	8	3.13	19.2
R5166.100-052	m 1	52	52	54	6	8	20	14	8	3.25	20.5
R5166.100-055	m 1	55	55	57	6	8	20	14	8	3.44	22.7
R5166.100-056	m 1	56	56	58	6	8	20	14	8	3.50	23.4
R5166.100-060	m 1	60	60	62	6	8	20	14	8	3.75	26.5
R5166.100-064	m 1	64	64	66	6	8	20	14	8	4.00	29.8
R5166.100-070	m 1	70	70	72	6	8	20	14	8	4.38	35.1
R5166.100-072	m 1	72	72	74	6	8	20	14	8	4.50	37.0
R5166.100-080	m 1	80	80	82	6	8	20	14	8	5.00	45.1
R5166.100-090	m 1	90	90	92	6	8	30	14	8	5.62	60.8



Order No.	Module	No. of teeth z	Pitch dia. d ₁	d ₂	w ₁	d ₃ tol. H9	d ₄	l ₁	l ₂	Torque Nm max.	Weight g
R5166.100-100	m 1	100	100	102	6	8	30	14	8	6.25	73.4
R5166.100-120	m 1	120	120	122	6	8	30	14	8	7.49	102.7