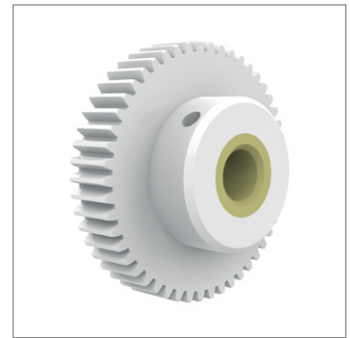
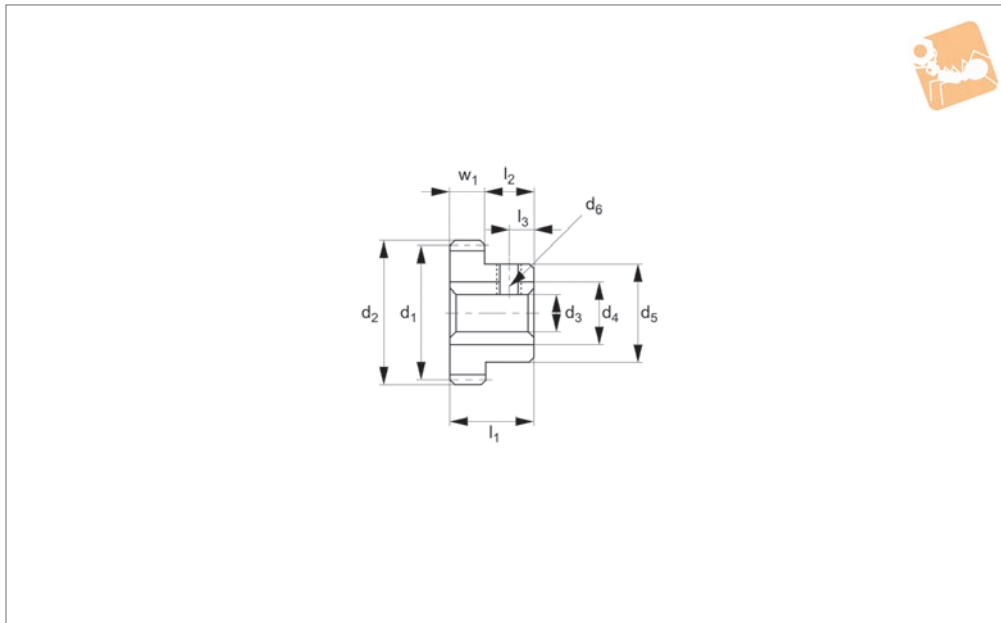




Spur Gears - Module 1 - Plastic

white polyacetal - brass bush - 20-120 teeth



R5170

STANDARD SPUR GEARS

Material

White polyacetal, with brass bushing.
Accuracy to JIS B 1702-1 (ISO) class 9-10.

Technical Notes

20° pressure angle, full depth tooth.

Amount of backlash when assembling gears = 0,06 - 0,12mm.

Tips

Max. allowable torque (Nm) is based on standard operating conditions (see technical pages) with a safety factor of 1.2. For non standard applications apply a suitable safety factor depending on frequency of use, type of working etc.

Max. allowable torque (Nm) is based on standard operating conditions (see technical pages) with a safety factor of 1.2. For non standard applications apply a suitable safety factor depending on frequency of use, type of working etc.

Order No.	Module	No. of teeth z	Pitch dia. d ₁	d ₂	w ₁	d ₃ tol. H8	d ₄	d ₆	l ₁	l ₂	l ₃	Thread d ₅	Torque Nm max.	Weight g
R5170.100-020	m 1	20	20	22	10	8	16	12	20	10	4	M 4	1.54	16.8
R5170.100-024	m 1	24	24	26	10	8	20	12	20	10	4	M 4	1.84	17.5
R5170.100-025	m 1	25	25	27	10	8	20	12	20	10	4	M 4	1.92	18.0
R5170.100-028	m 1	28	28	30	10	10	24	16	20	10	4	M 4	2.15	35.0
R5170.100-030	m 1	30	30	32	10	10	24	16	20	10	4	M 4	2.30	36.4
R5170.100-032	m 1	32	32	34	10	10	24	16	20	10	4	M 4	2.46	37.8
R5170.100-036	m 1	36	36	38	10	10	30	16	20	10	4	M 4	2.76	38.0
R5170.100-040	m 1	40	40	42	10	10	30	16	20	10	4	M 4	3.07	41.4
R5170.100-045	m 1	45	45	47	10	10	30	16	20	10	4	M 4	3.45	46.1
R5170.100-048	m 1	48	48	50	10	10	30	16	20	10	4	M 4	3.68	49.2
R5170.100-050	m 1	50	50	52	10	10	30	16	20	10	4	M 4	3.84	51.4
R5170.100-056	m 1	56	56	58	10	10	30	16	20	10	4	M 4	4.29	58.5
R5170.100-060	m 1	60	60	62	10	10	30	16	20	10	4	M 4	4.60	63.7
R5170.100-064	m 1	64	64	66	10	10	30	16	20	10	4	M 4	4.91	69.2
R5170.100-070	m 1	70	70	72	10	10	30	16	20	10	4	M 4	5.37	78.2
R5170.100-072	m 1	72	72	74	10	10	30	16	20	10	4	M 4	5.52	81.4
R5170.100-080	m 1	80	80	82	10	10	30	16	20	10	4	M 4	6.13	94.9
R5170.100-090	m 1	90	90	92	10	10	30	16	20	10	4	M 4	6.89	113.9
R5170.100-100	m 1	100	100	102	10	10	30	16	20	10	4	M 4	7.66	135.1
R5170.100-120	m 1	120	120	122	10	10	30	16	20	10	4	M 4	9.18	184.1