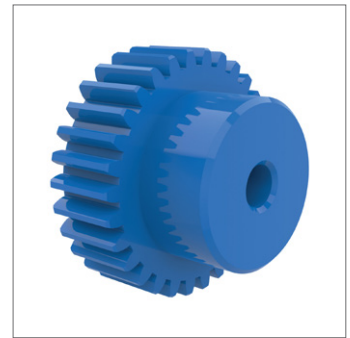
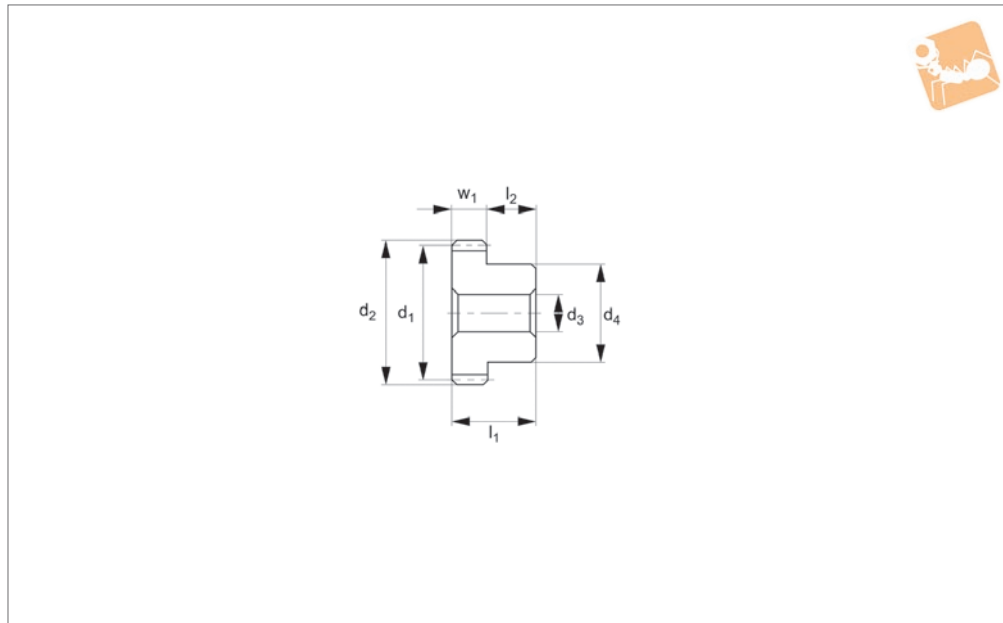




Spur Gears - Module 1.5 - Plastic

blue polyacetal - 15-60 teeth



R5193

STANDARD SPUR GEARS

Material

Polyacetal, blue, machined.
Accuracy to JIS B 1702-1 (ISO) class 9-10.

Technical Notes

20° pressure angle, full depth tooth.
Amount of backlash when assembling gears = 0,09 - 0,18 mm.
Blue polyacetal machined gears are

suitable for use in food machinery applications. Approved by the FDA (USA) and by regulators in the EU and Japan, where the food has an alcohol percentage of <15%. Please clean gears thoroughly before use.

Tips

For module 1.5 blue plastic gears with 14 teeth see R5191.

Max. allowable torque (Nm) is based on standard operating conditions (see technical pages) with a safety factor of 1.2. For non standard applications apply a suitable safety factor depending on frequency of use, type of working etc.

Order No.	Module	No. of teeth z	Pitch dia. d ₁	d ₂	w ₁	d ₃ tol. H9	d ₄	l ₁	l ₂	Torque Nm max.	Weight g
R5193.150-015	m 1.5	15	22.5	25.5	15	6	18	30	15	1.51	12.4
R5193.150-016	m 1.5	16	24.0	27.0	15	6	18	30	15	1.65	13.6
R5193.150-018	m 1.5	18	27.0	30.0	15	8	20	30	15	1.94	16.4
R5193.150-020	m 1.5	20	30.0	33.0	15	8	22	30	15	2.23	20.6
R5193.150-022	m 1.5	22	33.0	36.0	15	8	24	30	15	2.53	25.3
R5193.150-024	m 1.5	24	36.0	39.0	15	8	24	30	15	2.82	28.7
R5193.150-025	m 1.5	25	37.5	40.5	15	8	28	30	15	2.97	32.8
R5193.150-026	m 1.5	26	39.0	42.0	15	8	28	30	15	3.12	35.9
R5193.150-028	m 1.5	28	42.0	45.0	15	8	30	30	15	3.41	41.8
R5193.150-030	m 1.5	30	45.0	48.0	15	8	32	30	15	3.83	48.2
R5193.150-032	m 1.5	32	48.0	51.0	15	8	35	30	15	4.14	56.2
R5193.150-035	m 1.5	35	52.5	55.5	15	8	40	30	15	4.60	69.9
R5193.150-036	m 1.5	36	54.0	57.0	15	8	40	30	15	4.75	72.5
R5193.150-040	m 1.5	40	60.0	63.0	15	10	45	30	15	5.53	89.7
R5193.150-045	m 1.5	45	67.5	70.5	15	10	50	30	15	6.33	113.5
R5193.150-048	m 1.5	48	72.0	75.0	15	10	55	30	15	6.81	132.6
R5193.150-050	m 1.5	50	75.0	78.0	15	10	55	30	15	7.13	139.9
R5193.150-055	m 1.5	55	82.5	85.5	15	10	60	30	15	7.93	136.8
R5193.150-056	m 1.5	56	84.0	87.0	15	10	60	30	15	8.09	173.2
R5193.150-060	m 1.5	60	90.0	93.0	15	10	65	30	15	8.90	200.9